



Florens EDI Transmission Guidelines (April 2008)

EDI is a standard communication protocol for system-to-system integration of Florens with depots. In container leasing or related transportation industry, depots can set up EDI with their customers to submit and receive container movement and MNR information electronically.

Standard EDI Messages

Florens accepts a standardized EDI integration process. We support CEDEX and UN/EDIFACT message standards.

Message Formats

Florens' EDI message format are widely adopted market standard (UN/EDIFACT and CEDEX) for system-to-system integration for container Gate-In, Gate-Out and MNR estimate details. Other message formats which acceptable by Florens system include customized flat file provided by depots.

Transmission Protocols

The Simple Mail Transfer Protocol (SMTP) is the email communication protocol which Florens uses for capturing EDI messages directly from depots as email attachments.

Methods of sending EDI files to Florens

(1) Prepare your EDI files

The EDI file extension must be in either one of below listed 3 types. It should be generated by Win Bridge or depots' in-house system.

- txt
- imp
- exp

For **CEDEX** flat file format, there may be maximum FOUR attachments in one email, the GATEIN, GATEOUT, WESTIM and WESTIMDT. The file name format has to be renamed as below convention.

```
GATEIN:      DDDDDD GATEIN XXXXXXXX•EXP
GATEOUT:     DDDDDD_GATEOUT_XXXXXXX•EXP
WESTIM:      DDDDDD_WESTIM_XXXXXXX•EXP
WESTIMDT:    DDDDDD_WESTIMDT_XXXXXXX•EXP
```

Where DDDDDD is the depot code assigned by Florens, xxxxxxxx is depot's own reference for the file name.

For examples:

```
GATE IN:   USNYC1_GATEIN_XYZABC . EXP
GATEOUT:  USNYC1_GATEOUT_XYZABC . EXP
WESTIM:   USNYC1_WESTIM_XYZABC . EXP
WESTIMDT: USNYC1 _WESTIMDT_XYZABC . EXP
```

For **EDIFACT** format, the file name format has to be renamed as below convention.

```
DDDDD EDI FACT XYZABC . TXT
```

```
DDDDD      = depot code assigned by Florens (e.g. USNYC1)
EDI FACT   = definition of the file type
XYZABC     = depot's own reference of the file
TXT        = file extension
```

For example:

```
USNYC1_EDIFACT_31DEC2005 .txt
```

- (2) Prepare an email with the subject line shows: FLORENS DIRECT EDI
- (3) Insert the EDI files as email attachment.
- (4) Send the email to Florens email address: EDIManager@florens.com after completing the test. See below for testing EDI transmission with Florens.

Procedures for Testing New Depots/Messages

- Before Testing

Florens local office will send to depot EDI Transmission Guidelines so that they are aware our EDI requirements.

FLORENS local office should ensure that the depot's EDI address code is in the system.

- Test Procedures:

The type of the EDI file must be either in EDIFACT format or CEDEX flat file format.

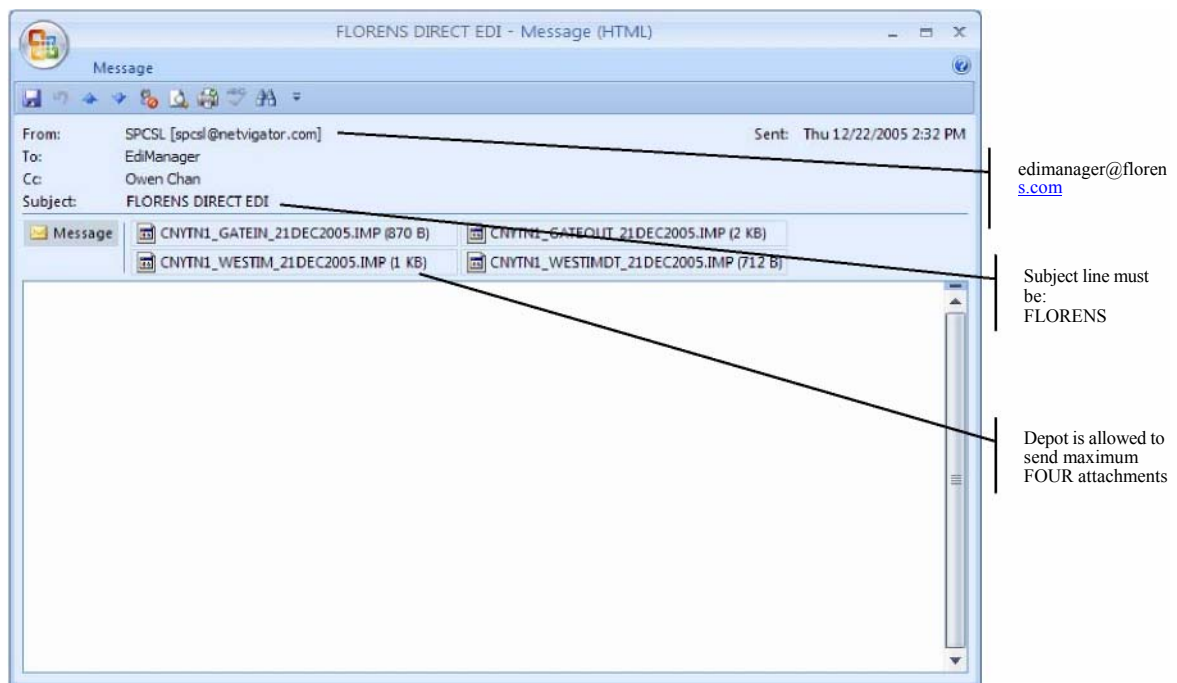
1. Depot should send an email with EDI file as attachments. to EDITest @florens.com.
2. The subject line of the email must be Florens Direct EDI.

3. Rename your EDI files as mentioned previously and send to us as attachments by email.
4. Florens local office will inform depot of the status of the test messages.
5. Coordinate with the depot when to begin production.

NOTE: Send all gate activity and status changes by the end of each working day. Estimates and revisions may be sent the following day.

Please note that the EDI transmission will fail if the depots use *ZZZ* and *ZZ* for component and repair codes. They will be notified via email to use correct code. THIS VALIDATION IS FOR DRY VANS ONLY.

Sample of email attaching with EDI files to be sent by depot to Florens system.



Validation of incoming EDI files from depots

Florens' system will perform a wide range of validation to all incoming EDT messages sending by depots; instant update will be performed if no errors found. Otherwise, depots have to respond to the instruction delivered by Florens' system for appropriate actions.

Sample of acknowledgement routing back depot to confirm receipt of EDI messages.

EDI File Acknowledgement : AUFRE1 06-NOV-2006 06:21 (GMT) - Message (Plain Text)

Message

You replied on 11/6/2006 2:39 PM.

From: Florens Container Services Sent: Mon 11/6/2006 2:25 PM
To: alf@vianet.net.au; Jamie Driscoll; Owen Chan; Sunil Kothari; Michael Yip; Adrian Chan
Cc:
Subject: EDI File Acknowledgement : AUFRE1 06-NOV-2006 06:21 (GMT)

Process Date: 06-NOV-2006 06:24 (GMT)
06-NOV-2006 14:24 (Hong Kong GMT+8:00)

EDI Type	Depot	File Name	Line	Batch ID
GATEIN	AUFRE1	AUFRE1_GATEIN_03NOV2006.exp	1	000017275
GATEOUT	AUFRE1	AUFRE1_GATEOUT_03NOV2006.exp	1	000017276
WESTIMDT	AUFRE1	AUFRE1_WESTIMDT_03NOV2006.exp	3	000017277
WESTIM	AUFRE1	AUFRE1_WESTIM_03NOV2006.exp	1	000017278

Worldwide major cities time difference with GMT

Australia (Sydney)	: GMT +10 hours
Hong Kong	: GMT +8 hours
India (Bombay)	: GMT +5.5 hours
Africa (Cap Town)	: GMT +2 hours
Europe (London)	: GMT
S.America East (Buenos Aires)	: GMT -3 hours
US East Coast (New York)	: GMT -5 hours
US West Coast (San Francisco)	: GMT -8 hours

This is a system generated e-mail notification.
Please do not copy to "Florens Container Services" when replying this message.

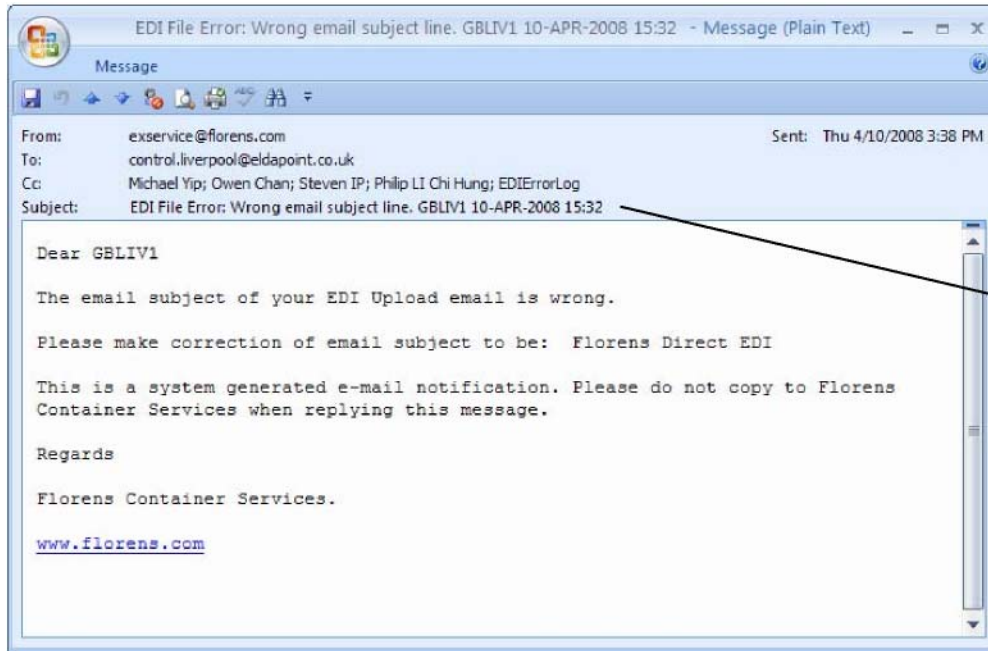
Regards

Florens Container Services.
www.florens.com

Annotations:

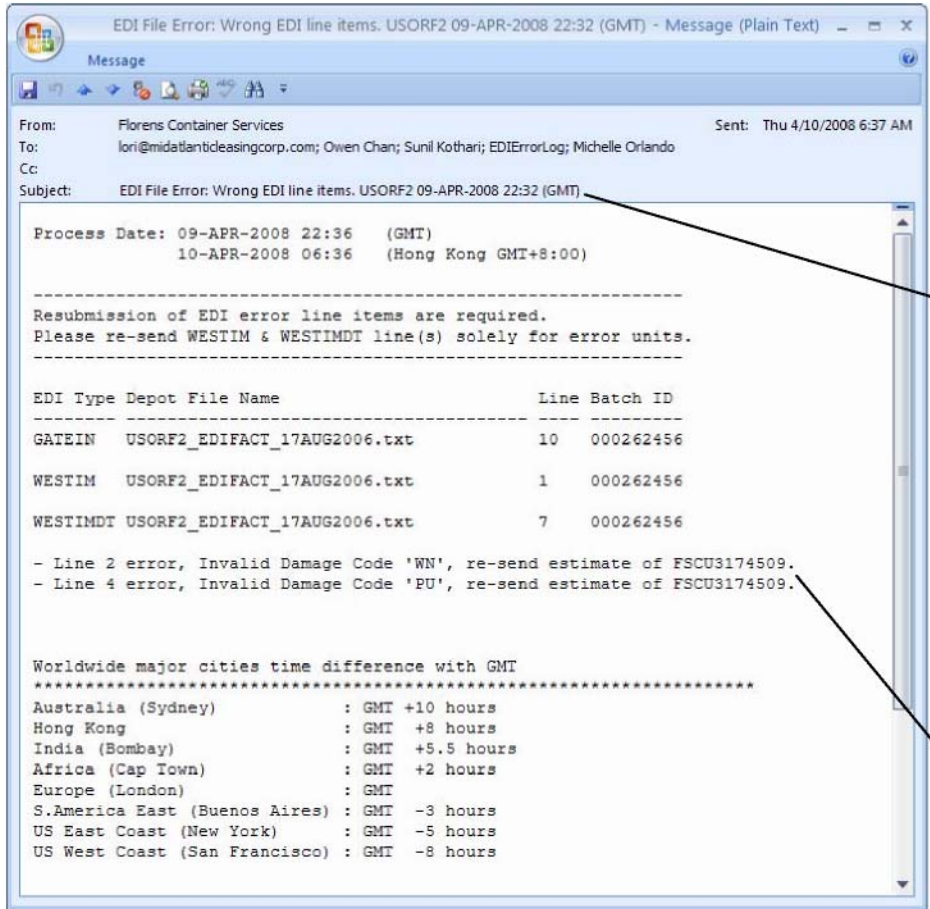
- Florens system will acknowledge the receipt of depots' EDT files by sending
- Florens system will stamp the date and time depots EDT files being accepted.
- After validation Florens system will show number of EDT line detail
- Florens system will list the name of EDT files being accepted.

Sample of email notifying depot for amendment of EDI email subject line.



After validation by Florens system, notification will be given to depot for

Sample of email notifying depot for amendment of MNR line items.



Florens system will verify EDT file content and advise errors if any.

Estimate line items are required to amend and resend.

Florens EDI Required Specification

For helping depot in translation of which pieces of information are mandatory for Florens' system, below (EDI) specification is a set of **standard** structuring information that is to be electronically exchanged.

GATEIN / GATEOUT

CEDEX Field					EDIFACT Field	
#	NAME	POS	WIDTH	DESCRIPTION	Segment Tag	CE/DE ref#
3	SENT_DATE	3	8	Date message sent	UNB	S004 0017
5	REC_DATE	12	8	Date message received		
13	ADVICE	62	14	ACCEPTANCE ADVICE number	RFF+BN RFF+ACC RFF+REL	C274 1154 C274 1154
14	UNIT_ID_A	76	4	e.g.: CONU – prefix	EQD+CN EQF	C271 8114
15	UNIT_ID_N	80	6	e.g.: 123456 - unit number		
16	UNIT_ID_C	86	1	e.g.: 1 - check digit		
17	EQUIP_TYPE	87	3	CON, CHZ or GEN	EQF	(1 ST DE)
20	CONDITION	124	10	Text description e.g.: DAMAGED	ECI	8521 8521
21	COMP_ID_A	134	4	Companion Unit Prefix		
22	COMP_ID_N	138	6	Companion Unit Number		
23	COMP_ID_C	144	1	Companion Unit Check-Digit		
27	EIR_DATE	182	8	Date of EIR (YYYYMMDD)	DTM+ATR	C033 2001
29	REFERENCE	195	35	Customer Reference	UNH	0068 0068
46	DPT_TRM	305	9	Depot Code	UNB NAD+MS NAD+LED	S002 '0004 C082 3039
52	NOTE	351	70	Free Text	TXT	0078 0078
53	NOTE	421	70	Free Text		
60	REVISION	540	1	Revision number of EIR	UNH	S010 0070
82	COMP_ID_A2	986	4	Companion Unit Number		
83	COMP_ID_N2	990	6	Companion Unit Number		
84	COMP_ID_C2	996	1	Companion Unit Number		
**	Total	1384 – GI / 1419 - GO				

WESTIM

CEDEX Field					EDIFACT Field	
#	NAME	POS	WIDTH	DESCRIPTION	Segment Tag	CE/DE ref#
5	REC_DATE	12	8	Date received		
12	TRNSXN	48	14	Estimate Number (Match this field with TRNSXN in WESTIMDT)	UNH	0062
14	REVISION	63	1	Revision number of estimate	UNH	S010 0070
15	ESTIM_DATE	64	8	Date of estimate	RFF+EST	C033 2001
16	UNIT_ID_A	72	4	e.g.: CONU – prefix	EQF	C271 8114
17	UNIT_ID_N	76	6	e.g.: 123456 - unit number		
18	UNIT_ID_C	82	1	e.g.: 1 - check digit		
20	EQUIP_TYPE	118	3	CON, CHZ or GEN	EQF	(1 ST DE)
28	CONDITION	194	10	Condition at time of redelivery	ECI	8521
40	DPT_TRM	275	9	Depot Code	NAD+LED	C082 3039
47	NOTE 1	321	70	Free Text	TXT	0078
48	NOTE2	391	70	Free Text		
49	NOTE3	461	70	Free Text		
50	BAS_CURR	531	3	Base currency for estimates	ACA+STD	6345
51	LABOR_RATE	534	12,2	Labor rate	LBR	8578
52	DPP_CURR	546	3	Currency for DPP	ACA+DPP	6345
58	U_LABOR	577	10,2	Labor cost for USER/LESSEE	CTO+U	5536
59	U_MATERIAL	587	10,2	Material cost for USER/LESSEE	CTO+U	5537
61	U_TAX	607	10,2	Tax for USER/LESSEE	CTO+U	5538
63	I_LABOR	627	10,2	Labor cost for INSURER (DPP)	CTO+I	5536
64	I_MATERIAL	637	10,2	Material cost for INSURER (DPP)	CTO+I	5537
66	I_TAX	657	10,2	Tax for INSURER (DPP)	CTO+I	5538
68	O_LABOR	677	10,2	Labor cost for OWNER/LESSOR	CTO+O	5536
69	O_MATERIAL	687	10,2	Material cost for OWNER/LESSOR	CTO+O	5537
71	O_TAX	707	10,2	Tax for OWNER/LESSOR	CTO+O	5538
78	S_LABOR	777	10,2	Special billing labor cost for SURVEYOR	CTO+S	5536
79	S_MATERIAL	787	10,2	Special billing material cost for SURVEYOR	CTO+S	5537
81	S_TAX	807	10,2	Special billing tax for SURVEYOR	CTO+S	5538
89	ADVICE	887	14	Acceptance Advice Number	RFF+ACC	C274 1154
91	AUTH_NUM	915	14	Work Authorization Number	RFF+AUT	C274 1154
92	AUTH_AMT	929	10,2	Work Authorization Amount	TMA	5492
94	AUTH_DATE	948	8	Approval Date	RFF+AUT	C033 2001
95	O_ESTIM_DATE	956	8	Original Date of Estimate	RFF+EST	C033 2001

WESTIMDT

CEDEX Field					EDIFACT Field	
#	NAME	POS	WIDTH	DESCRIPTION	Segment Tag	CE/DE ref##
5	TRNSXN	19	14	ESTIMATE number (Match this field with TRNSXN in WESTIM)	UNH	0062
6	REVISION	33	1	Revision number	UNH	S010 0070
7	ESTIM_DATE	34	8	Date of document	RFF+EST	C033 2001
8	UNIT_ID_A	42	4	e.g.: CONU – prefix	EQF	C271 8114
9	UNIT_ID_N	46	6	e.g.: 123456 - unit number		
10	UNIT_ID_C	52	1	e.g.: 1 - check digit		
13	LINE	117	2	Line item number	DAM	1082
14	REPAIR	119	2	Repair code	WOR	8526
15	REPEATS	121	3	Quantity - number of damages	WOR	6060
16	DAMAGE	124	2	Damage code	DAM	8524
17	COMPONENT	126	3	Component code	DAM	8523
18	COMP_MATL	129	2	Component material	DAM	8525
19	LOCATION	131	4	Location code	DAM	8522
20	LENGTH	135	8,2	Length dimension	WOR	C858 6168
21	WIDTH	143	8,2	Width dimension	WOR	C858 6140
22	HEIGHT	151	8,2	Height dimension	WOR	C858 6008
23	DT_UNITS	159	3	Unit of measure	WOR	C858 6410
24	HOURS	162	6,2	Hours for line item	COS	5533
25	SCALE	168	2	Work scale (05,10,15, etc.)	COS	8531
26	MAT_COST	170	15,2	Line item material cost	COS	5534
27	DT_PTY_RSPONS	185	1	Party responsible for line item	COS	3535

Florens required Condition Code & Explanation

ACTIVITY	Condition Code	Condition Column in EDIRPT
Gate In	"A" or "D"	A = available, D = damaged
Original Estimate/All estimates on behalf of depot	"D"	D = Damaged
Lessee Survey Only	"E"	E = Lessee/User Surveyed
Lessor Survey Only	"L"	L = Lessor/Owner Surveyed
Fully Approved & Surveyed By Lessor & Lessee	"K"	K = Owner/User Surveyed and approved
Lessee Survey with Authorization	"G"	G = Lessee/User Surveyed with Authorization
Lessor Survey with Authorization	"H"	H = Lessor Surveyed with Authorization
Lessee Authorization Only	"F"	F = Lessee Authorization Only
Fully Approved	"J"	J = Approved by Lessor and Lessee
Repair (gate in message)	"C"	R = Repairs Completed
Gate Out	"A"	A = available
Gate In (Cosco Resale units only)	"X"	X = To be disposed
Gate Out	"S"	S = Sold

Acceptable ISO and Non-ISO MNR codes

Florens prefers and supports the use of the recommended IICL EDIS codes as shown on the IICL TB002 document. However Florens system will accept the location, component, damage and repair, ISO and non-ISO codes shown on this document to meet industry practices. Florens depots should not use codes other than the ones listed on this document since our system validates the corresponding data. Please contact Florens office in case you would like to propose the addition of new codes to our table.

(Please refer to document ISO_&_Non_ISO_MNR_Codes.pdf)

ISO_&_Non_ISO_M NR_Codes.xls

location code

Location code	Short name	Long Name
BB	Floor Bottom	Floor Bottom
BG	Floor Lower	Floor Lower
BH	Floor Upper	Floor Upper
BL	Floor Left	Floor Left
BR	Floor Right	Floor Right
BT	Floor Top	Floor Top
BX	Floor Whole	Floor Whole
DB	Door Bottom	Door Bottom Half
DG	Door Lower	Door Lower Component
DH	Door Upper	Door Upper Component
DL	Door Left	Door Left Half
DR	Door Right	Door Right Half
DT	Door Top	Door Top Half
DX	Door End	Entire door
EB	Exterior Bottom	Exterior Bottom
EG	Exterior Lower	Exterior Lower
EH	Exterior Upper	Exterior Upper
EL	Exterior Left	Exterior Left
ER	Exterior Right	Exterior Right
ET	Exterior Top	Exterior Top
EX	Exterior Whole	Exterior Whole
FB	Front End Bottom	Front End Bottom
FG	Front End Lower	Front End Lower
FH	Front End Upper	Front End Upper
FL	Front End Left	Front End Left
FR	Front End Right	Front End Right
FT	Front End Top	Front End Top
FX	Front End Whole	Front End Whole
IB	Interior Bottom	Interior Bottom
IG	Interior Lower	Interior Lower
IH	Interior Upper	Interior Upper
IL	Interior Left	Interior Left
IR	Interior Right	Interior Right
IT	Interior Top	Interior Top
IX	Interior Whole	Interior Whole
LB	Left Side Bottom	Left Side Bottom
LG	Left Side Lower	Left Side Lower
LH	Left Side Upper	Left Side Upper
LL	Left Side Left	Left Side Left
LT	Left Side Top	Left Side Top
LX	Left Side Whole	Left Side Whole
MC	Rfr Cntr	
ME	Rfr Elec	
MF	Rfr Fram	
MK	Rfr Cnds	
MN	Rfr Unsp	
MP	Rfr Pipe	
MQ	Uns Comp	
MV	Rfr Evap	
MX	Rfr Whle	
MZ	Rfr Misc	
NB	Uns Bttm	
NC	Uns Cnds	
NE	Uns Elec	
NF	Uns Cnds	
NG	Uns Bttm	
NH	Uns Top	
NK	Uns Cnds	
NL	Uns Left	
NN	Uns Cnds	
NP	Uns Cnds	
NR	Uns Rght	
NT	Uns Top	
NV	Uns Cnds	
NX	Uns Whle	

ISO_&_Non_ISO_M NR_Codes.xls

location code

Location code	Short name	Long Name
NZ	Uns Cnds	
RB	Right Side Bottom	Right Side Bottom
RG	Right Side Lower	Right Side Lower
RH	Right Side Upper	Right Side Upper
RR	Right Side Right	Right Side Right
RT	Right Side Top	Right Side Top
RX	Right Side Whole	Right Side Whole
UB	Understructure Bottom	Understructure Bottom
UG	Understructure Lower	Understructure Lower
UH	Understructure Upper	Understructure Upper
UL	Understructure Left	Understructure Left
UR	Understructure Right	Understructure Right
UT	Understructure Top	Understructure Top
UX	Understructure Whole	Understructure Whole
XB	Whole Container Bottom	Whole Container Bottom
XG	Whole Container Lower	Whole Container Lower
XH	Whole Container Upper	Whole Container Upper
XL	Whole Container Left	Whole Container Left
XR	Whole Container Right	Whole Container Right
XT	Whole Container Top	Whole Container Top
XX	Whole Container	Whole Container
TB	Roof/Top Bottom	Roof/Top Bottom
TG	Roof/Top Lower	Roof/Top Lower
TH	Roof/Top Upper	Roof/Top Upper
TL	Roof/Top Left	Roof/Top Left
TR	Roof/Top Right	Roof/Top Right
TT	Roof /Top Top	Roof /Top Top
TX	Roof /Top Whole	Roof /Top Whole

ISO_&_Non_ISO_MNR_Codes.xls

damage code

Damage Code	Short Description	Long Description
BK	Blocked	Blocked
BL	Blowout	Blowout
BN	Burned	Burned
BO	Burned Out	Burned out
BR	Broken/Split	Broken/Split
BT	Bent	Bent
BW	Bowed	Bowed
CB	Curbing	Curbing
CD	Consequential Damage	Consequential Damage
CH	Rusted & Holed	Rusted & Holed GENERAL
CK	Cracked	Cracked
CL	Compression Line	Compression line
CO	Corroded/Rusted	Corroded/Rusted
CT	Contaminated	Contaminated
CU	Cut	Cut
CW	Cracked Weld	Cracked Weld
DB	Debris/Dunage	Debris/Dunage
DL	Delaminated	Delaminated
DT	Dent	Dent
DY	Dirty	Dirty
FZ	Seized/Frozen	Seized/Frozen
GD	Gouged	Gouged
GO	Surface Crack	Surface Crack
GP	GRP Cracked	GRP cracked through plywood
HO	Holed	Holed
IR	Improper Repair	Improper Repair
LF	Low Fluid Level	Low Fluid Level
LK	LK/Leak	Leak
LO	LO/Loose	Loose component
MA	Misaligned	
ML	Foreign Markings	Foreign Markings
MM	Mismatched	
MS	MS/Missing	Miss / lost component
NI	NI/Not ISO	Not within ISO
NL	NL/Nails	Nails in flooring
NO	NO/Not Req	Not required by owner
NP	Not in Place	Not in Place
NT	NT/Not Tir	Not to TIR
OD	OD/Insp Ot	Out of date inspection
OL	OL/Oil sat	Oil saturated
OR	OR/Odor	Odor
OS	OS/Oil stns	Oil stains
OU	OU/Unaccep rpr	Other unacceptable repair
PD	Pushed Down	
PF	PF/Paint failure	Paint failure
PH	PH/Pin Holes	Component is damaged by minute holes
RF	Run Flat	
RH	RH/Pin hls	Pin holes
RO	RO/Rotten	Rotten
SA	SA/ Scratch- Abraded	Scratched or abraded by friction
SH	Short/Open Circuit	
TS	TS/Casing	Casing, tread separated
WA	WA/Warped	Warped
WM	WM/Wrng MT	Wrong material
WT	WT/Wear & tear	Wear & tear
ZZ	ZZ/Not appl	Not applicable

Component code	Assembly	Short Description	Long Description
ABP	RFBX	Air Baffle Floor Plate	Reefer container GENERAL
ACC	RFMS	Accumulator	Storage chamber for liquid refrigerant.
ADU	RFMS	Air Duct	Component which allows air circulation in Reefers
AED	RFBX	Air Exchnng Valve Gasket	Reefer container GENERAL
AFP	RFMS	Primary Air Filter	Primary device for Screening Air Flow
AFS	RFMS	Secondary Air Filter	Secondary Device for Screening Air Flow
AMS	RFBX	Ambient Sensor	Reefer container GENERAL
AOA	RFMS	Air Opening Assembly	Air opening assembly
APS	RFMS	Air Pressure switch	Device to Detect Pressure Diff. accross EVAP Coil
ARC	RFBX	Fresh Air Vent Cover	Reefer container GENERAL
ARD	MISC	Anti-Rack Device	Device that Reinforces Securement to Locking Bar
ARE	RFMS	Air Exchange Vent	Device that allows Air Renewal to Reduce Gas Conc.
ARF	RFBX	4" Air Exchange Vent	Reefer container GENERAL
ARG	RFBX	6" Air Exchange Vent	Reefer container GENERAL
ARK	RFBX	Fresh Air Vent - Knob	Reefer container GENERAL
ARO	MISC	Anti-Rack Omega	Anti-Rack Device in form of an Omega Reinforcement
ARP	MISC	Anti-Rack Plate	Anti-Rack Plate
ARR	RFBX	Fresh Air Vent Spindle	Reefer container GENERAL
ARS	MISC	Anti-Rack Spigot	Anti-Rack Spigot
ASA	MISC	Air screen assembly	Air screen assembly
ASD	RFMS	Dual Speed Compressor	Reefer Machinery GENERAL
ASF	RFMS	Air screen flap	Air screen flap
ASG	RFMS	Air screen gasket	Air screen gasket
ASH	RFMS	Air screen hinge	Air screen hinge
ASL	RFMS	Air screen lock	Air screen lock
ASP	RFMS	Air screen panel	Air screen panel
ASY	RFMS	Compressor with Motor	complete Assembly with motor
ATS	STAA	Safety Anti-Theft Wire	IICL Flat Rack Manual
BAM	RFMS	Amplifier electr. board	Amplifier electronic board
BAN	RFMS	Analog Board-Partlow	Reefer Machinery GENERAL
BCA	RFMS	Controller box	Controller box
BCC	RFMS	Timing&Currnt elec. brd.	Timing+current contrl. elec. brd.
BCD	RFMS	Contrler box door	Controller box door
BCG	RFMS	Controller box door gasket	Controller box door gasket
BCH	RFMS	Controller box door hinge	Controller box door hinge
BCS	RFMS	Control box door screws	Reefer Machinery GENERAL
BCT	RFMS	Control electronic board	Control electronic board
BCW	RFMS	Controller box door windw	Controller box door window
BDB	RFMS	Diagonal Bracing	Reefer Machinery GENERAL
BEA	RFMS	Electrical box	Electrical box
BEB	RFMS	Stud 1/4 Turn Elect.	Reefer Machinery GENERAL
BEC	RFMS	Washer - 1/4 Turn Stud	Reefer Machinery GENERAL
BED	RFMS	Electrical door	Electrical door
BEG	RFMS	Electrical door gasket	Electrical door gasket
BEH	RFMS	Electrical door hinge	Electrical door hinge
BEL	RFMS	Electrical Door Latch	Reefer Machinery GENERAL
BEM	RFMS	Electrical circuit diagrm	Reefer Machinery GENERAL
BEN	RFMS	Electrical door securing	Reefer Machinery GENERAL
BES	RFMS	Electrical component shld	Electrical component shield
BEW	RFMS	Electrical door window	Reefer Machinery GENERAL
BFL	RFMS	Controller door hinge	Reefer Machinery GENERAL
BFR	RFMS	Controller door hinge	Reefer Machinery GENERAL
BLA	RFMS	Fan blade	Reefer Machinery GENERAL
BLI	RFMS	Liquid injection controll	Reefer Machinery GENERAL
BLO	RFMS	Controller logic board	Reefer Machinery GENERAL
BML	RFMS	Controller door hinge	Reefer Machinery GENERAL
BMN	RFMS	Mother electronic board	Mother electronic board
BMR	RFMS	Controller door hinge	Reefer Machinery GENERAL
BMS	RFMS	Power&Supply in elec. brd	Power+supply in range elec. brd.
BNG	RFMS	Bearing	Bearing
BNK	RFMS	Bearing - cond fan motor	Reefer Machinery GENERAL
BNV	RFMS	Bearing - evap fan motor	Reefer Machinery GENERAL

Component code	Assembly	Short Description	Long Description
BOH	RFMS	Feeler bulb	Feeler bulb
BPD	RFMS	Controller board part	Reefer Machinery GENERAL
BPO	RFMS	Controller power display	Reefer Machinery GENERAL
BPR	RFMS	Phase reversal elect bord	Phase reversal electronic board
BRA	RFMS	Recorder box	Recorder box
BRD	RFMS	Recorder box door	Recorder box door
BRE	RFMS	Controller relay board	Reefer Machinery GENERAL
BRF	RFBX	Bottom rail flange - Alum	Reefer container GENERAL
BRG	RFMS	Recorder box door gasket	Recorder box door gasket
BRH	RFMS	Recorder box door hinge	Recorder box door hinge
BRL	RFMS	Recorder box door window	Recorder box door window
BRT	RFMS	Controller board part	Reefer Machinery GENERAL
BRV	RFMS	Bulkhead rivets	Reefer Machinery GENERAL
BRY	RFMS	Relay electronic board	Relay electronic board
BSF	RFMS	Bearing, crankshaft	Bearing, crankshaft
BSK	RFMS	Bearing shields cond motr	Reefer Machinery GENERAL
BSV	RFMS	Bearing shields evap motr	Reefer Machinery GENERAL
BTC	RFMS	Temp. control elec. board	Temperature control elec. brd.
BTD	RFMS	Time delay board 6 Minute	Reefer Machinery GENERAL
BTO	RFMS	6 Minute Timer	Reefer Machinery GENERAL
CAC	RFMS	Atmosphere contoller	Controlled-atmosphere controller
CAD	RFMS	Controlld atmsphere drier	Controlled-atmosphere drier
CAF	RFMS	Cond/Evap fixing bolts	Reefer Machinery GENERAL
CAH	RFMS	Controld atmsphere heater	Controlled-atmosphere heater
CAK	RFMS	Cndnsr fan mtr. capacitatr	Condenser fan motor capacitor
CAQ	RFMS	Compressor motor capacitatr	Compressor motor capacitor
CAR	RFMS	Controlld atmsh. compressor	Controlled-atmosphere compress
CAS	RFMS	Coil assembly	Coil assembly
CAV	RFMS	Evap. fan motr capacitatr	Evaporator fan motor capacitor
CAW	RFMS	Cntrl atmshr door switch	Contrl. -atmosphere door switch
CBB	RFMS	Circuit breaker, 230 V	Circuit breaker, 230 V
CBE	RFMS	8 amp Circuit Breaker	Reefer Machinery GENERAL
CBF	RFMS	Circuit Breaker	Reefer Machinery GENERAL
CBH	RFMS	Circuit breaker heat shld	Reefer Machinery GENERAL
CBM	RFMS	Circuit brkr mount brackt	Reefer Machinery GENERAL
CBR	RFMS	Circuit breaker, 460 V	Circuit breaker, 460 V
CBT	RFMS	Circuit Breaker	Reefer Machinery GENERAL
CBV	RFMS	Circuit Breaker	Reefer Machinery GENERAL
CBW	RFMS	Circuit Breaker	Reefer Machinery GENERAL
CCB	RFMS	Cond. coil mounting brckt	Condenser coil mounting bracket
CCF	STAA	Top Plate Hinge Assembly	IICL Flat Rack Manual
CCH	RFMS	Cond. door middle hinge	Reefer Machinery GENERAL
CCK	RFMS	MPA Chip Kit	Reefer Machinery GENERAL
CCL	RFMS	Cable clamp	Reefer Machinery GENERAL
CCO	RFMS	Cable cover (Swing Down)	Reefer Machinery GENERAL
CDA	RFMS	Condenser deck assembly	Reefer Machinery GENERAL
CDF	RFMS	Condenser grill	Reefer Machinery GENERAL
CDH	RFMS	Condenser door hinge	Reefer Machinery GENERAL
CDI	RFMS	Condnsr. door panel hinge	Reefer Machinery GENERAL
CDN	RFMS	Condenser grill screw	Reefer Machinery GENERAL
CDP	RFMS	Condenser door panel	Reefer Machinery GENERAL
CDR	RFMS	Carbon dioxide scrubber	Carbon dioxide scrubber
CDS	RFMS	Sensor, carbon dioxide	Sensor, carbon dioxide
CDV	RFMS	Condenser venturi	Reefer Machinery GENERAL
CDY	RFMS	Carbon dioxide supply	Carbon dioxide supply
CEX	RFMS	Container exterior	Reefer Machinery GENERAL
CFB	RFMS	Top casting filler plate	Reefer Machinery GENERAL
CFG	CNPA	Corner fitting	Corner Fitting
CFI	RFMS	Coil fins	Coil fins
CFK	RFMS	Fins - Condenser Coil	Reefer Machinery GENERAL
CFP	RFMS	Condenser front plate	Reefer Machinery GENERAL
CFV	RFMS	Fins - Evaporator Coil	Reefer Machinery GENERAL

Component code	Assembly	Short Description	Long Description
CHL	RFMS	Clip On genrtr hole -low	Clip-on generator mount hole low
CHP	RFMS	High-pressure cutout	High-pressure cutout
CHR	RFMS	Defrst/heat resistr cntct	Defrost/heating resistors contact.
CHU	RFMS	Clip On genrtr hole - up	Clip-on generator mount hole up
CIN	CONT	Container interior	Cont GENERAL
CKA	RFMS	Condnsr fan motr contactr	Condenser fan motor contactor
CKH	RFMS	Condnsr motor high speed	Condensor fan motor high-speed
CKL	RFMS	Condnsr motor low speed	Condensor fan motor low-speed
CKP	RFMS	Controller key pad	Reefer Machinery GENERAL
CLH	RFMS	Condenser door hinge	Reefer Machinery GENERAL
CLO	RFMS	Oil cut out	Oil cutout
CLP	RFMS	Low-pressure cutout	Low-pressure cutout
CMA	UNST	Cross member asmbly	Cross memeber assembly
CMC	RFMS	CMC Contactor	Reefer Machinery GENERAL
CME	RFMS	Contacto mounting rail	Reefer Machinery GENERAL
CMF	UNST	Fixing Plate	Fixing Plate
CMH	RFMS	Condenser Fan Housing	Reefer Machinery GENERAL
CMI	RFMS	Other devices- not listed	Other devices (not listed)
CMK	RFMS	Controller CMS	Reefer Machinery GENERAL
CML	UNST	Lower Flange	Lower Flange
CMM	RFMS	Condenser fan motor mount	Reefer Machinery GENERAL
CMN	RFMS	Communication module	Reefer Machinery GENERAL
CMO	UNST	Short crossmember	SHORT CROSSMEMBER FROM TUNNEL
CMR	RFMS	Contacto mounting rail	Reefer Machinery GENERAL
CMS	UNST	Whole section	Whole Section
CMU	UNST	Upper flange	Upper Flange
CMV	RFMS	Condenser fan venturi	Reefer Machinery GENERAL
CMW	UNST	Web	Web
CMX	UNST	Cross Member - Aluminium	UNST GENERAL
COB	RFMS	Collector brush	Collector brush
COL	RFMS	Collector	Collector
CON	RFMS	Connections	Connections
COO	RFMS	CO2 sampling plug	CO2 sampling plug
COP	RFMS	Contacto panel	Reefer Machinery GENERAL
COS	CNPA	Clip-on genset clamp	Clip-on Genset Clamp
CPA	CNPA	Cornr post assembly	Cornr post assembly
CPG	CNPA	Gusset	Gusset
CPH	RFMS	Phase contactor	Phase contactor
CPI	CNPA	Corner post - inner piece	Corner post - inner piece
CPJ	CNPA	J Bar	J Bar
CPL	CNPA	Hinge lug	Hinge Lug
CPO	CNPA	Corner post - Outer Piece	Corner post - Outer Piece
CPR	CNPA	Corner post reinforcement	Corner post reinforcement
CPS	CNPA	Corner post -single piece	Corner post -single piece
CPT	CNPA	Corner post whole section	Corner post whole section
CPU	RFMS	Microprocessor controller	Microprocessor controller
CQA	RFMS	Compressor contactor	Compressor contactor
CQB	RFMS	Comp - 60A High Speed	Reefer Machinery GENERAL
CQC	RFMS	Comp - 40A Low Speed	Reefer Machinery GENERAL
CQD	RFMS	Comp - 60A High Speed	Reefer Machinery GENERAL
CQH	RFMS	Comprsr highspeed contctr	Compressor high-speed contactor
CQL	RFMS	Comprsr lowspped contctr	Compressor low-speed contactor
CRE	RFMS	Regulation terminals	Regulation terminals
CRH	RFMS	Condenser Door hinge	Reefer Machinery GENERAL
CRV	RFBX	Coving - rivet fixing	Reefer container GENERAL
CSF	RFMS	Crankshaft	Crankshaft
CSK	RFMS	Condenser coil assembly	Reefer Machinery GENERAL
CSP	STAA	Coil Spring Connect/wedge	IICL Flat Rack Manual
CSS	RFMS	Microprocessor securing	Reefer Machinery GENERAL
CSV	RFMS	Evaporator Coil Assembly	Reefer Machinery GENERAL
CTA	RFBX	Cross member T-Clip Al.	Reefer container GENERAL
CTB	RFMS	CFM Terminal Box	Reefer Machinery GENERAL

Component code	Assembly	Short Description	Long Description
CTC	RFMS	CFM Terminal Box Cover	Reefer Machinery GENERAL
CTF	RFMS	Current Transformer	Reefer Machinery GENERAL
CTG	RFMS	CFM Terminal Box Gland	Reefer Machinery GENERAL
CTH	RFMS	Controller Cover Hinge	Reefer Machinery GENERAL
CTM	RFMS	Controller - MPA	Reefer Machinery GENERAL
CTN	RFMS	Controller	Reefer Machinery GENERAL
CTO	RFMS	Controller (PCB) Front	Reefer Machinery GENERAL
CTP	RFMS	Controller Partlow	Reefer Machinery GENERAL
CTR	RFMS	Controller	Controller
CTS	RFBX	Cross member T-Clip Steel	Reefer container GENERAL
CVA	RFMS	Evaporator Contactor	Reefer Machinery GENERAL
CVH	RFMS	Evap. fan motr high-speed	Evaporator fan motor high-speed
CVL	RFMS	Evaporator contactor	Evaporator contactor
CWA	RFMS	Water-cooled condenser	Water-cooled condenser
CYA	RFMS	Cylinder	Cylinder
CYG	RFMS	Cylinder head cover gaskt	Cylinder head cover gasket
CYH	RFMS	Cylinder head	Cylinder head
CYS	RFMS	Unloader solenoid	Unloader solenoid
CYU	RFMS	Cylinder unloader	Cylinder unloader
DAA	DOOR	Door - Complete (W/O Hdw)	Door - Complete (W/O Hdw.)
DAH	DOOR	Door - Complete (W/Hdw.)	Door - Complete (W/ Hdw.)
DCA	DOOR	Door with Hardware	Door GENERAL
DCE	RFMS	Controller	Reefer Machinery GENERAL
DCS	DOOR	Door Custom Seal Point	Door Custom Seal Point
DCU	RFMS	Mod. atmospkr door curtain	Mod. atmosphere door curtain
DEF	CONT	Drop end frame Colapsible	Cont GENERAL
DFA	DOOR	Door incl hardw	Door with Hardware - Flat - GENERAL code
DFS	DOOR	Door/Front Sill Stiffener	Door GENERAL
DGR	DOOR	Door Gear - Complete	Door Gear - Complete
DHB	DOOR	Door Hinge Bushing	Door Hinge Bush(ing)
DHC	DOOR	Door handle catch	Door Handle Catch
DHL	DOOR	Door handle lock assembly	Door Handle Lock Assembly
DHR	DOOR	Door handle retainer	Door Handle Retainer
DIK	RFMS	Defrost knob	Defrost interval sel. switch knob
DIS	RFMS	Defrost switch	Defrost interval selector switch
DKK	RFBX	Kazoo	KAZOO SELF OPENING DRAIN
DPA	RFMS	Drain pan	Drain pan
DPH	RFMS	Drainport defrost heaters	Drain port defrost heaters
DPL	DOOR	Door stop/slam	Door Stop/Slam
DPR	DOOR	Door plate rivets	Door Plate Rivets
DRA	RFBX	Drain plug assembly	Drain plug assembly
DRB	RFMS	Drive belt	Drive belt
DRC	RFMS	Filter Drier Clamp/Strap	Reefer Machinery GENERAL
DRD	RFMS	Drier fixings	Reefer Machinery GENERAL
DRF	RFMS	Drier filter	Drier filter
DRK	RFMS	Condenser drain tube	Reefer Machinery GENERAL
DRL	DOOR	Door retainer lug	door reainer lug
DRN	RFMS	Drain tube	Drain tube
DRP	RFBX	Drain plug	Drain plug
DRS	RFMS	Roller Shutter Door	Reefer Machinery GENERAL
DRT	DOOR	Door retainer	Door Retainer
DSA	DOOR	Door Striker - Aluminium	Door GENERAL
DSB	DOOR	Door stifner bottm end	Door Stiffener - Bottom Ed
DSC	DOOR	Door Stiffner Center Line	Door Stiffener - Center Line edge
DSH	DOOR	Door stifner-hinge side	Door Stiffener - Hinge Side
DSM	DOOR	Door stifner verticl panl	Vertical door stiffener panel
DSO	DOOR	Door security plug door	Door GENERAL
DSP	DOOR	Door Striker - Plastic	Door GENERAL
DSS	DOOR	Door Striker - Stainless	Door GENERAL
DST	DOOR	Door Stiffener - Top	Door Stiffener - Top
DTH	RFMS	Drain tube defrost heater	Drain tube defrost heaters
DUA	RFMS	Controller	Reefer Machinery GENERAL

Component code	Assembly	Short Description	Long Description
DUR	RFMS	Controller	Reefer Machinery GENERAL
DUT	RFMS	Controller	Reefer Machinery GENERAL
EAA	PANL	Endwall - complete	Endwall - Complete
EAP	RFMS	Evaporator Access Panel	Reefer Machinery GENERAL
EBE	RFMS	Earth Bar - 8 Way	Reefer Machinery GENERAL
EBR	RAIL	Collapsible End Wall	Rail GENERAL
ECB	RFMS	Cable, 460 V	Cable, 460 V
ECC	RFMS	Cable, 230 V	Cable, 230 V
ECD	RFMS	Cable indicator sleeve 460V	Cable indicator sleeve, 460 V
ECE	RFMS	Cable indicator sleeve 230V	Cable indicator sleeve, 230 V
ECF	RFMS	Cable Receptacle Female	Reefer Machinery GENERAL
ECG	RFMS	Electrical Cable Gland	Reefer Machinery GENERAL
ECK	RFMS	Cable Gland - Condenser	Reefer Machinery GENERAL
ECL	RFMS	Evap Panel - Lower	Reefer Machinery GENERAL
ECM	RFMS	Cable Receptacle Male	Reefer Machinery GENERAL
ECN	RFMS	Electrical Cable Hose/Tub	Reefer Machinery GENERAL
ECP	RFMS	Evaporator Door Panel	Reefer Machinery GENERAL
ECQ	RFMS	Electrical Cable Gland	Reefer Machinery GENERAL
ECR	RFMS	Cable Retaining Device	Reefer Machinery GENERAL
ECT	RFMS	Electrical Cable Trays	Reefer Machinery GENERAL
ECX	RFMS	Electrical Cable Grommet	Reefer Machinery GENERAL
EDG	RFMS	Evaporator Door Gasket	Reefer Machinery GENERAL
EDH	RFMS	Electrical diagram holder	Electrical diagram holder
EDL	RFMS	Electrical Door Hinge	Reefer Machinery GENERAL
EDP	RFMS	Evaporator Door Panel	Reefer Machinery GENERAL
EDR	RFMS	Electrical Door Screw	Reefer Machinery GENERAL
EDS	RFMS	Electrical Circuit Diagram	Reefer Machinery GENERAL
EDU	RFMS	Electrical Door Hinge	Reefer Machinery GENERAL
EDV	RFMS	Evaporator Door Gasket	Reefer Machinery GENERAL
EDX	RFMS	Electrical diagram	Electrical diagram
EFH	STAA	End frame hinge assembly	Rotating assembly supporting end frames
EFL	RFMS	Evap Fan Housing	Reefer Machinery GENERAL
EFR	RFMS	Evap Fan Housing - Right	Reefer Machinery GENERAL
EGA	RFMS	Plastic Air Screen - Upper	Reefer Machinery GENERAL
EGB	RFMS	Poly Air Screen - Upper	Reefer Machinery GENERAL
EGR	RFMS	Cable Grommet	Reefer Machinery GENERAL
EGS	RFMS	Evaporator Grill - Side	Reefer Machinery GENERAL
EGT	RFMS	Evaporator Grill - Top	Reefer Machinery GENERAL
EHA	RFMS	End Wall Heel Assembly	Reefer Machinery GENERAL
EHB	STAA	End wall heel plate	End wall heel plate
EHP	RFMS	End Wall Heel Pin	Reefer Machinery GENERAL
EHR	RFMS	End Wall Heel Pin Retainer	Reefer Machinery GENERAL
EHW	RFMS	Endwall Heel Plate Wedge	Reefer Machinery GENERAL
ELA	RFMS	End Wall Latch Assembly	Reefer Machinery GENERAL
ELB	RFMS	End Wall Latch Bush	Reefer Machinery GENERAL
ELF	RFMS	Electrical Door Hinge	Reefer Machinery GENERAL
ELH	STAA	End Post Down Lock Handle	IICL Flat Rack Manual
ELM	RFMS	Electrical Door Hinge	Reefer Machinery GENERAL
ELN	RFMS	End Wall Latch Pin	Reefer Machinery GENERAL
ELP	RFMS	End Wall Latch Pin	Reefer Machinery GENERAL
ELR	RFMS	End Wall Latch Pin Retainer	Reefer Machinery GENERAL
ELS	RFMS	End Wall Latch Rubber	Reefer Machinery GENERAL
ELU	RFMS	End Wall Latch Bracket	Reefer Machinery GENERAL
EMB	RFMS	EFM Motor Terminal Box	Reefer Machinery GENERAL
EMC	RFMS	EFM Motor Terminal Box Cover	Reefer Machinery GENERAL
EMG	RFMS	EFM Motor Terminal Box	Reefer Machinery GENERAL
EMI	RFMS	Other elec. devices	Other elec. devices (not listed)
EMM	RFMS	Evaporator Motor Mount	Reefer Machinery GENERAL
EPE	RFMS	Electrical plug 230V	Electrical plug, 230 V
EPL	RFMS	Electrical plug 460V	Electrical plug, 460 V
EPS	RFMS	Power supply terminal plate	Power supply terminal plate
ERB	RFMS	Electronic Data Recorder Battery	Reefer Machinery GENERAL

Component code	Assembly	Short Description	Long Description
ERC	RFMS	Data Retrieval Socket Cap	Reefer Machinery GENERAL
ERD	RFMS	Elect. recdr/data logger	Electronic recorder/data-logger
ERF	RFMS	Electrical Door Hinge	Reefer Machinery GENERAL
ERI	RFMS	USDA Receptacle - 5 Pins	Reefer Machinery GENERAL
ERM	RFMS	Electrical Door Hinge	Reefer Machinery GENERAL
ERO	RFMS	USDA Receptacle - 4 Pins	Reefer Machinery GENERAL
ERP	RFMS	Electronic Data Retrieval	Reefer Machinery GENERAL
ERS	RFMS	Data Retrieval Socket	Reefer Machinery GENERAL
ESP	RFMS	Evaporator Panel - Side	Reefer Machinery GENERAL
ETB	RFMS	End Wall Torsion Bar	Reefer Machinery GENERAL
ETC	RFMS	End Wall Torsion Bar Bear	Reefer Machinery GENERAL
ETP	RFMS	Evaporator Panel - Top	Reefer Machinery GENERAL
ETR	RAIL	Flatrack Endwall Toprail	Rail GENERAL
ETS	RFMS	Ethylene scrubber	Ethylene scrubber
EVS	RFMS	Defrost sensor	Evap. coil/defrost temp. sensor
FAB	PANL	Rear and Front Frame	Panel GENERAL
FAD	DOOR	Rear Door Frame Only	Door GENERAL
FAE	CONT	Ext Complete Excl U/side	Cont GENERAL
FAF	PANL	Front Frame Only	Panel GENERAL
FAG	RFMS	Fresh Air Valve Gasket	Reefer Machinery GENERAL
FAI	CONT	Ext Complete Incl U/side	Cont GENERAL
FAN	RFMS	Fan	Fan
FAO	UNST	Gooseneck & Outriggers	UNST GENERAL
FAS	RFMS	Frame assembly	Frame assembly
FAU	CONT	Complete Frame Incl U/sid	Cont GENERAL
FAX	CONT	Complete Frame Excl U/sid	Cont GENERAL
FBG	CONT	Rear/Front/G.neck Frame	Cont GENERAL
FBI	CONT	Rear/Front Frames Incl U/	Cont GENERAL
FCH	RFMS	Refrigerant charge	Refrigerant charge
FCP	MISC	Custom Seal Point	Misc GENERAL
FCS	MISC	Custom Seal Unit Frame	Misc GENERAL
FDG	CONT	Rear & Gooseneck Frame	Cont GENERAL
FFG	CONT	Front & Gooseneck Frame	Cont GENERAL
FGQ	MISC	Food Grade Quality	Misc GENERAL
FHD	RFMS	Fuse holder	Fuse holder
FHS	FLOR	Hat Section	Hat Section
FIK	RFMS	Condenser Coil	Reefer Machinery GENERAL
FIV	RFMS	Evaporator Coil	Reefer Machinery GENERAL
FIX	RFMS	Securing Device	Fixing/securing device
FKL	RFMS	Condenser Fan Wheel	Reefer Machinery GENERAL
FKN	RFMS	Condenser Fan Motor	Reefer Machinery GENERAL
FKR	RFMS	Condenser Fan Wheel	Reefer Machinery GENERAL
FLA	UNST	Forklift pocket assembly	Forklift pocket assembly
FLB	FLOR	Laminated Plank	Laminated Plank
FLL	UNST	Lower Flange	Lower Flange
FLP	UNST	Top Plate	Top Plate
FLS	UNST	Strap	Strap
FLT	UNST	Fork Pockt Trvrs Sctn	Fork Pocket transvers Section
FLU	UNST	Upper Flange	Upper Flange
FLW	UNST	Web	Web
FMB	RFMS	Main Frame Bolts	Reefer Machinery GENERAL
FMI	RFMS	Othr frame devices	Other frame devices (not listed)
FPB	FLOR	Plain Plank	Plain Plank
FPP	FLOR	Plywood Plank	Plywood Plank
FRC	FLOR	Floor Recess Channel	Flor GENERAL
FRL	MISC	Spring Extension Link	Misc GENERAL
FRP	MISC	Post Spring Connection	Misc GENERAL
FRS	STAA	Flat rack spring	Flat rack spring
FRT	MISC	Flat Rack Torsion Bar	Misc GENERAL
FSA	FLOR	Floor Support Angle	Floor Support Angle
FSP	FLOR	Steel Plate - Combo Floor	Steel Plate of Combo Floor
FTP	FLOR	Threshold Plate	Threshold Plate

Component code	Assembly	Short Description	Long Description
FUN	RFMS	Fumigation Nozzle	Reefer Machinery GENERAL
FUP	RFMS	Safety Valve / plug	Safety valve - fusible plug
FUS	RFMS	Fuse	Fuse
FVL	RFMS	Evaporator Fan Wheel	Reefer Machinery GENERAL
FVN	RFMS	Evaporator Fan	Reefer Machinery GENERAL
FVR	RFMS	Evaporator Fan Wheel	Reefer Machinery GENERAL
FWA	FLOR	Floor Assembly	Wood Floor Assembly
GAS	RFMS	Frame gaskets	Frame gaskets
GDI	RFMS	Discharge pressure guage	Discharge pressure guage
GIN	DOOR	Inner Gasket	Inner Gasket
GIO	DOOR	Inner/Outer Gaskets	Inner/Outer Gaskets
GLI	RFMS	Evaporator grille	Evaporator grille
GLK	RFMS	Condensor grille	Condensor grille
GRS	DOOR	Gasket Retainer Strip	Gasket Retainer Strip
GSU	RFMS	Suction pressure guage	Suction pressure guage
GTA	DOOR	Gasket Assembly	Gasket Assembly
GTH	RFMS	Evap Door Horizontal Seal	Reefer Machinery GENERAL
GTL	RFMS	Gasket Aluminium Striker	Reefer Machinery GENERAL
GTO	DOOR	Outer Gasket	Outer Gasket
GTP	RFMS	Plastic Gasket	Reefer Machinery GENERAL
GTV	RFMS	Evap Door Vertical Seal	Reefer Machinery GENERAL
HAP	RFMS	Heater access panel	Heater access panel
HCC	DOOR	Hatch customs point	Holes in the hatch handle catch
HCL	RFMS	Clamping device-lower	Device to attach clip-on gen. to the lower resp.
HCU	RFMS	Clamping device - upper	Clamping device, upper
HDI	STAA	Inner Hinge Assembly/wedg	IICL Flat Rack Manual
HDP	RFMS	Drain Pan Heaters	Drain Pan heaters
HEP	RAIL	Header Extension Plate	Header Extension Plate
HEX	RFMS	Heat exchanger	Heat exchanger
HGA	DOOR	Hinge Assembly	Hinge Assembly
HGB	DOOR	Hinge Blade	Hinge Blade
HGO	STAA	Outer Hinge Assembly	IICL Flat Rack Manual
HGP	DOOR	Hinge Pin	Hinge Pin
HLA	STAA	End Post Down Header Lock	IICL Flat Rack Manual
HLP	STAA	End Post Down Lock Pin	IICL Flat Rack Manual
HLR	STAA	Header Lock Guide Plate	IICL Flat Rack Manual
HLS	STAA	End Post Down Lock Spring	IICL Flat Rack Manual
HMT	RFMS	Hourmeter	Hourmeter
HPC	RAIL	Header Pin Chain	Header Pin Chain
HPH	RAIL	Header pin Hndle	Header Pin Handle
HPP	MISC	Header Pin	Misc GENERAL
HRA	RFMS	Hanging rail assembly	Hanging rail assembly
HRB	RFMS	Hanging rail bar	Hanging rail bar
HRH	RFMS	Hanging rail hook	Hanging rail hook
HUC	RFMS	Humidity control	Humidity control
HUM	RFMS	Humidifier	Humidifier
HUS	RFMS	Humidity Sensor	Reefer Machinery GENERAL
HVC	RFMS	Evaporator coil heaters	Evaporator coil heaters
HVM	RFMS	HV Module	Reefer Machinery GENERAL
HWD	RFBX	Hardware - Delamination	Reefer container GENERAL
HWH	RFBX	Hardware - Huckbolts	Reefer container GENERAL
HWR	NTAP	Hardware, screws,bolts	Hardware, screws,bolts
ICU	CONT	Interior Complete	Cont GENERAL
IFQ	RFMS	Compressor/Frame Insul.	Reefer Machinery GENERAL
IFT	PANL	Interior Front Only	Panl GENERAL
INC	PANL	Interior Complete	Panl GENERAL
INP	RFMS	Inner panel	Inner panel
IRA	PANL	Interior Complete & Roof	Panl GENERAL
IRR	PANL	Interior Rear Only	Panl GENERAL
ISL	RFMS	Suction line insulation	Suction line insulation
ITP	RFBX	Intermediate Post	Reefer container GENERAL
JAA	FRAM	Frame assembly	Frame

Component code	Assembly	Short Description	Long Description
JAB	ELEC	Control box, main	Electrical System
JAC	FRAM	Cover	Frame
JAD	FRAM	Door	Frame
JAF	FRAM	Forklift pocket	Frame
JAH	MIGE	Hardware	Misc. Generator set component
JAL	FRAM	Mounting pin	Frame
JAM	MIGE	Markings	Misc. Generator set component
JAO	MIGE	Other components	Misc. Generator set component
JAP	FRAM	Panel	Frame
JAU	FRAM	Mounting clamp	Frame
JBA	ELEC	Circuit breaker, 460V	Electrical System
JBB	ELEC	Circuit board	Electrical System
JBC	ELEC	Circuit breaker, 230V	Electrical System
JBD	ELEC	Circuit breaker, 12V	Electrical System
JBF	RFMS	Compressor Terminal Box	Reefer Machinery GENERAL
JBR	RFMS	Compressor Terminal Box	Reefer Machinery GENERAL
JDB	WATR	Water hose	Water System
JDD	FULE	Fuel hose	Fuel System
JDO	OILS	Oil hose	Oil System
JDP	ENGI	Piping	Engines
JEB	ELEC	Battery charger receptacl	Electrical System
JED	ELEC	Battery hold-down	Electrical System
JEE	ELEC	Exciter cover gasket	Electrical System
JEF	ELEC	Battery charger plug	Electrical System
JEG	ELEC	Glow plugs	Electrical System
JEH	ELEC	Hourmeter	Electrical System
JEJ	ELEC	Battery clamps	Electrical system
JEK	WATR	Water temp. sensor	Water System
JEL	ALTR	Alternator	Alternator
JEM	ELEC	Starter motor solenoid	Electrical System
JEN	ELEC	Ammeter	Electrical System
JEO	RFMS	Battery	Battery
JER	ELEC	Regulator	Electrical system
JES	ELEC	Starter motor	Electrical System
JET	RFMS	Receptacle 230V	Recetacle 230 V
JEU	RFMS	Receptacle460V	Female connector for 460 V circuit
JEY	RFMS	wiring general	wiring general
JFB	RFMS	Comp Term Box - Front	Reefer Machinery GENERAL
JFF	FULE	Fuel filter	Fuel System
JFG	FULE	Fuel gauge	Fuel System
JFH	FULE	Fuel heater	Fuel System
JFI	FULE	Injection pump	Fuel System
JFO	FULE	Injection nozzle	Fuel System
JFP	FULE	Fuel hand pump	Fuel System
JFR	FULE	Engine fuel strainer	Fuel System
JFS	FULE	Fuel filter, secondary	Fuel System
JFT	FULE	Fuel tank	Fuel System
JGC	ENGI	Gasket, cylinder head fro	Engines
JGE	ENGI	Gasket, exhaust manifold	Engines
JGF	ENGI	Gasket, cylinder block fr	Engines
JGH	ENGI	Gasket, cylinder head	Engines
JGI	ENGI	Gasket, intake manifold	Engines
JGO	OILS	Oil pan gasket	Oil System
JGW	WATR	Water pump O-ring	Water System
JIC	MIGE	Clamps	Misc. Generator set component
JIF	MIGE	Fasteners	Misc. Generator set component
JJF	ENGI	Radiator cap	Engines
JJH	ENGI	Radiator hose	Engines
JJR	ENGI	Radiator assembly	Engines
JJS	ENGI	Radiator	Engines
JKD	ENGI	Thermostat	Engines
JMA	ALTR	Alternator assembly	Alternator

Component code	Assembly	Short Description	Long Description
JMB	ALTR	Alternator bearing	Alternator
JMD	ALTR	Alternator disc rotor dri	Alternator
JME	ELEC	Alternator exciter field	Electrical System
JMN	ELEC	Alternator diode, negativ	Electrical system
JMP	ELEC	Alternator diode, positiv	Electrical System
JMR	ALTR	Alternator starter	Alternator
JNA	ENGI	Engine assembly	Enginea
JNB	ENGI	Engine bearing	Engines
JNC	ENGI	Engine cylinder head cov	Engines
JND	ENGI	Engine air cleaner	Engines
JNE	ENGI	Engine belt	Engines
JNF	ENGI	Engine fan	Engines
JNG	OILS	Oil pressure gauge	Oil System
JNH	ENGI	Engine cylinder head	Engines
JNI	ENGI	Idler	Engines
JNJ	ENGI	Crankshaft bearings	Engines
JNL	OILS	Oil filter	Oil System
JNM	ENGI	Muffler/silencer	Engines
JNP	ENGI	Piston assembly	Engines
JNQ	ENGI	Engine exhaust manifold	Engines
JNR	ENGI	Bearing and rod assembly	Engines
JNS	ENGI	Engine bowl strainer	Engines
JNU	OILS	Oil pan	Oil System
JNV	ENGI	Crankshaft	Engines
JNY	ENGI	Idler pulley	Engines
JNZ	ENGI	Rain cap	Engines
JOD	FULE	Diesel fuel	Fuel System
JOE	FULE	Anti-freeze	Fuel System
JOG	OILS	Oil level gauge	Oil System
JOO	OILS	Oil	Oil System
JOT	OILS	Oil temp. gauge	Oil System
JPA	RFMS	J-Plug Assembly Wiring	Reefer Machinery GENERAL
JPB	RFMS	J-Plug Harness Cont Data	Reefer Machinery GENERAL
JPE	RFMS	J-Plug Harness Keypad	Reefer Machinery GENERAL
JRR	ELEC	Run control relay	Electrical System
JSH	ELEC	Switch, high temp. cutout	Electrical System
JSL	ELEC	Switch, low oil pressure	Electrical System
JSO	ELEC	Switch, on/off	Electrical System
JSP	ELEC	Switch, preheat start	Electrical System
JSS	ELEC	Switch on/off motor	Electrical System
JST	ELEC	Switch, water high-temp.	Electrical System
JWA	WATR	Water pump, alternate	Water System
JWF	WATR	Anti-freeze (coolant)	Water System
JWK	WATR	Water temp. gauge	Water System
JWP	WATR	Water pump	Water System
JWS	WATR	Water separator	Water System
JWW	WATR	Water System	Water System
JXA	ELEC	Exciter assembly	Electrical System
JXB	ELEC	Exciter box	Electrical System
JXC	ELEC	Exciter cover	Electrical System
JXE	ELEC	Exciter rectifier diode	Electrical System
JXM	ELEC	Exciter voltmeter	Electrical System
JXP	ELEC	Exciter rectifier, 3-phas	Electrical System
JXR	ELEC	Exciter resistor	Electrical System
JXS	ELEC	Exciter socket	Electrical System
JXX	ENGE	Generator set, complete	Entire Generator set unit
KDF	RFMS	Condenser Door	Reefer Machinery GENERAL
KDR	RFMS	Condenser Door Screw	Reefer Machinery GENERAL
KDW	RFMS	Washer for Cond Door	Reefer Machinery GENERAL
KLX	RFMS	Overhead protectn switch	Overhead protection switch
KMC	RFMS	Elect Connection Cover	Reefer Machinery GENERAL
KMI	RFMS	Other devices	Other devices (not listed)

Component code	Assembly	Short Description	Long Description
KMK	RFMS	Elect Cover on Condenser	Reefer Machinery GENERAL
KMV	RFMS	Elect Cover on Evaporator	Reefer Machinery GENERAL
KRY	RFMS	Recorder Key	Reefer Machinery GENERAL
KTW	MISC	Twist Lock	Twist Lock on Flat Racks
KWC	RFMS	Receiver Clamp/Strap	Reefer Machinery GENERAL
KWF	RFMS	Condenser/Receiver Fixing	Reefer Machinery GENERAL
KWG	RFMS	Receiver Sight Glass	Reefer Machinery GENERAL
KWT	RFMS	Refrgnt receiver	Refrigerant receiver
KWX	RFMS	Receiver Sight Glass	Reefer Machinery GENERAL
LBA	DOOR	Locking Bar Assembly	Locking Bar Assembly
LBB	DOOR	Lckng Bar Brcket	Locking Bar Bracket
LBC	DOOR	Locking Bar Cam	Locking Bar Cam
LBF	DOOR	Door Customs Flap	Door Customs Flap
LBG	DOOR	Lckng Bar Guide	Locking Bar Guide
LBH	DOOR	Lckng Bar Handle	Locking Bar Handle
LBI	DOOR	Door Handle Retainer	Door GENERAL
LBL	DOOR	Locking Bar Lug	Locking Bar Lug
LBN	DOOR	Locking Bar Nut	Locking Bar Nut
LBR	DOOR	Locking bar rod/tube	Locking Bar Rod (Tube)
LBT	DOOR	lock bolt	lock bolt
LCK	DOOR	Locking Cam Keeper	Door GENERAL
LEB	MISC	Endwall Locking Bolt Asse	Misc GENERAL
LED	MISC	Endwall Securing Device	Misc GENERAL
LFB	STAA	Locking Flap Bracket	IICL Flat Rack Manual
LFP	STAA	Locking Flap Pin	IICL Flat Rack Manual
LGC	RFMS	Liquid Line	Reefer Machinery GENERAL
LHF	STAA	Lock Hammer Flap	IICL Flat Rack Manual
LHH	MISC	Locking Bar Handle Hub	Misc GENERAL
LIA	MISC	Interlink Assembly	Misc GENERAL
LIB	MISC	Interlocking Shoot Bolt	Misc GENERAL
LID	RFMS	LED Indicator	Reefer Machinery GENERAL
LIS	RFMS	Light Switch	Reefer Machinery GENERAL
LIT	RFMS	Monitor lights	Monitor lights
LLC	MISC	Locating Casting	Misc GENERAL
LLD	RFBX	Load Line Decal	Reefer container GENERAL
LMS	MISC	Locking Mechanism-Sill to	Misc GENERAL
LPA	MISC	LockPin Shaft/Ass Hammer	IICL Flat Rack Manual
LPB	STAA	Lockpin Shaft Bar only	IICL Flat Rack Manual
LPH	STAA	Post Lock Tap Pin	IICL Flat Rack Manual
LPL	MISC	Lock Stop Retaining Latch	Misc GENERAL
LPP	STAA	locking pin flatrack	locking pin end frame to side rail
LPS	STAA	Pin securing sill	Pin securing sill to corner fitting
LQB	RFMS	Liquid Line Brackets	Reefer Machinery GENERAL
LQF	RFMS	Liquid Line Fixings	Reefer Machinery GENERAL
LQL	RFMS	Liquid Line	Reefer Machinery GENERAL
LSA	STAA	Counter Balance LeafSprin	IICL Flat Rack Manual
LSB	MISC	Lashng Bar	Lashing Bar
LSC	MISC	Stacking Cone Assembly	Misc GENERAL
LSF	STAA	Leaf Sprg Follower/Former	IICL Flat Rack Manual
LSR	STAA	Leaf SPRG & BRKT Retainer	IICL Flat Rack Manual
LSS	STAA	Lockoin Shaft Stop Ring	IICL Flat Rack Manual
MAF	RFMS	Condenser Motor Fixings	Reefer Machinery GENERAL
MAO	RFMS	Evaporator Motor - Single	Reefer Machinery GENERAL
MAS	RFMS	Motor	Motor
MAT	RFMS	Evaporator Motor - Dual	Reefer Machinery GENERAL
MAX	RFMS	Compressor Motor	Reefer Machinery GENERAL
MBS	RFMS	Motor Bearing Shield	Reefer Machinery GENERAL
MCA	MISC	Caution Marking	Caution Marking
MCC	MISC	Country Code	Country Code
MCE	MISC	Acep Marking	ACEP Marking
MCH	MISC	ACEP Marking	ACEP Marking
MCL	RFMS	Clamping device lower	Clamping device, lower

Component code	Assembly	Short Description	Long Description
MCN	MISC	Decals - Control Box	Misc GENERAL
MCO	CONT	Cargo Container (Entire)	Cargo Container (Entire)
MCS	MISC	Class Survey Marking	Class Survey Marking
MDH	RFMS	Document holder	Document holder
MEB	MISC	Decals - Electrical Box	Misc GENERAL
MEC	MISC	Cable Area Decal	Misc GENERAL
MFS	MISC	Markings - Full Set	Markings - Full Set
MHC	MISC	High Cube Strip	High Cube Strip
MHT	MISC	Height Marking	Height Marking
MIM	RFMS	Other Compressor Motor Pa	Reefer Machinery GENERAL
MIN	RFMS	Other - Machinery	Other (motor, not listed)
MIS	MISC	ID. marking Set	Identification Marking Set
MKE	RFMS	Elect Cons - Condenser Mo	Reefer Machinery GENERAL
MKF	RFMS	HD Bolts - Condenser Moto	Reefer Machinery GENERAL
MKS	RFMS	Condenser Fan Motor	Reefer Machinery GENERAL
MLO	MISC	Manufacturers Logo	Misc GENERAL
MMF	MISC	Main Frame Decals	Misc GENERAL
MMI	MISC	Mass Marking	Mass Marking
MOC	MISC	Owners Code	Owners Code
MOL	MISC	Owners Logotype	Owners Logotype
MPC	MISC	Customs Plate	Customs Plate
MPD	MISC	Consolidated Data Plate	Consolidated Data Plate
MPL	MISC	Cargo Label Plate	Cargo Label Plate
MPM	MISC	Manufacturers Plate	Manufacturers Plate
MPO	MISC	Owners Plate	Owners Plate
MPR	MISC	Decals Condenser Receiver	Misc GENERAL
MPS	MISC	CSC Plates	CSC Plates
MPT	MISC	TCT	Timber Chemical Treatment
MQA	MISC	Decals - Compressor Area	Misc GENERAL
MRB	MISC	R134A Decal	Misc GENERAL
MRC	RFMS	Remote monitr cap&chain	Remote monitor rec. cap & chain
MRK	RFMS	Markings	Markings
MRM	RFMS	Remote Monitoring Module	Reefer Machinery GENERAL
MRP	RFMS	Remote monitoring plug	Remote monitoring plug
MRR	RFMS	Remote monitoring plug	allows motor start up sequence to be cancelled
MRU	MISC	Other Markings	Other Markings
MSD	MISC	Markings - Single Digit	Markings - Single Digit
MSN	MISC	Serial No. and Chk Digt.	Serial Number and Chk. Dig
MST	MISC	Size/Type Marking	Size/Type Marking
MSW	MISC	Decals - Switch Panel	Misc GENERAL
MTT	MISC	Timber Chemical Treatment	Misc GENERAL
MUI	MISC	UIC decal	UIC decal
MVE	RFMS	Elect Cons - Evap Fan Mot	Reefer Machinery GENERAL
MVF	RFMS	Bolt - Evap Fan Motor	Reefer Machinery GENERAL
MVP	RFMS	Evap Panel Decals	Reefer Machinery GENERAL
MVS	RFMS	Evaporator Fan Motor	Reefer Machinery GENERAL
OCH	RFMS	Oil charge	Oil charge
OCM	RFMS	Compressor Oil - Mineral	Reefer Machinery GENERAL
OCP	RFMS	Compressor Oil - POE	Reefer Machinery GENERAL
OMI	RFMS	Other - Machinery	Other devices not listed
ONS	RFMS	Oxygen/nitrogen separator	Oxygen/nitrogen separator
ONV	RFMS	Oxygen/nitrogen valve	Oxygen/nitrogen valve
ORL	UNST	Outrigger Flange	UNST GENERAL
OXS	RFMS	Sensor - oxygen	Sensor, oxygen
PAA	PANL	Panel Assembly	Panel Assembly
PAF	RFBX	Panel frame	Panel frame
PAL	PANL	Panel - Aluminium	Panel GENERAL
PAS	PANL	Panel - Stainless Steel	Panel GENERAL
PAT	RFBX	Panel transverse section	Panel transverse section
PBD	RFMS	Compressor Valve Plate	Reefer Machinery GENERAL
PBH	PANL	Behind Hinge	Behind Hinge
PBK	STAA	Bulkhead	Bulkhead

Component code	Assembly	Short Description	Long Description
PBT	RFBX	Battens in insulated panel	Battens in insulated panel
PDL	RFMS	Partlow Door Latch	Reefer Machinery GENERAL
PDR	RFMS	Partlow Door Lifter	Reefer Machinery GENERAL
PEP	RFBX	Panel edge profile	Panel edge profile
PFX	PANL	Fixing Strip	Fixing Strip
PHC	RFMS	Port hole collar	Port hole collar
PIC	RFBX	Panel inner cladding	Panel inner cladding
PIM	RFBX	Insulation material	Insulation material
PIP	PANL	Inner Face	Inner Face
PIS	RFBX	Panel-internal stiffener	Panel - internal stiffener
PJC	RFBX	Panel - joint capping	Panel - joint capping
PJP	RFBX	Panel - joint profile	Panel - joint profile
PKK	RFMS	Piston Pack	Reefer Machinery GENERAL
PLA	MISC	Post Locking Bolt Assembl	Misc GENERAL
PLB	STAA	Post locking bolt	post locking bolt
PLH	MISC	Post Locking Bolt Handle	Misc GENERAL
PLL	MISC	Post Locking Bolt Latch	Misc GENERAL
PLM	RFMS	Plug	Plug (modified atmosphere)
PLN	MISC	Post Locking Bolt Latch S	Misc GENERAL
PLR	MISC	Post Locking Bolt Bracket	Misc GENERAL
PLS	MISC	Post Locking Screw	Misc GENERAL
PMC	RFMS	Pipe Clamp	Reefer Machinery GENERAL
PMI	RFMS	Other devices - machinery	Other devices (not listed)
PNS	RFMS	Null Set Switch	Reefer Machinery GENERAL
POA	RFMS	Plug Assembly	Mod. atmosphere port/plug asem.
POC	RFBX	Panel - outer cladding	Panel - outer cladding
POL	RFMS	Overload protectn. switch	Overload protection switch
POM	RFMS	Port	Port (modified atmosphere)
POP	PANL	Outer Face	Outer Face
POS	RFMS	Outer Panel - Muffler	Reefer Machinery GENERAL
POT	RFMS	Potential Transformer	Reefer Machinery GENERAL
PPM	PANL	Plymetal	Plymetal
PPO	RFMS	Oil pump	Oil pump
PPS	STAA	End Wall Safe Pin Retaine	IICL Flat Rack Manual
PPW	PANL	Plywood Lining	Plywood Lining
PRG	RFMS	Pressure regulator	Pressure regulator
PRH	RFMS	High Pressure Relief Valv	Reefer Machinery GENERAL
PRS	RFMS	Phase reversal device	Phase reversal device
PRV	RFBX	Panel - Rivet Fixing	Reefer container GENERAL
PSC	PANL	Steel Corrugation	Steel Corrugation
PSF	FLOR	Flat Steel Panel	Flor GENERAL
PSS	RFMS	Power Saving Switch	Reefer Machinery GENERAL
PST	PANL	Roof Panel Assembly	Panel GENERAL
PTA	RFMS	Piston	Piston
PTB	RFMS	Piston ring	Piston ring
PTI	RFMS	Pre Trip Inspection	Reefer Machinery GENERAL
PTR	RFMS	Piston rod	Piston rod
PUM	RFMS	Motor pulley	Motor pulley
PUQ	RFMS	Compressor pulley	Compressor pulley
PVA	RFMS	Valve plate	Valve plate
PVB	RFMS	Compressor Valve Plate	Reefer Machinery GENERAL
PVC	RFMS	Compressor Valve Plate	Reefer Machinery GENERAL
QAS	RFMS	Open compressor w/o motor	Open compressor (w/o motor)
QBF	RFMS	Compressor Hold Down Bolt	Reefer Machinery GENERAL
QBP	RFMS	Compressor Base Plate	Reefer Machinery GENERAL
QBS	RFMS	QBS/Compressor base	Compressor base
QDA	RFMS	Compressor Vibration Damp	Reefer Machinery GENERAL
QMI	RFMS	Other compressor device	compressor device not listed
QPF	RFMS	Cable Guard Fixings	Reefer Machinery GENERAL
QPG	RFMS	Compressor enclosure cable	Comp. protection enclosure/cable
QPS	RFMS	Cable Guard Small	Reefer Machinery GENERAL
QSS	RFMS	Shaft seal	Shaft seal

Component code	Assembly	Short Description	Long Description
RAA	ROOF	Complete Roof	Roof - Complete
RAL	RAIL	Rail Assembly	Rail GENERAL
RBG	MISC	Large Corner Protection	Misc GENERAL
RBH	ROOF	Bow Holder	Bow Holder
RBO	ROOF	Roof bow	Bow
RBP	ROOF	Bow pin	Bow Pin
RBS	ROOF	Bow Securing Device	Bow Securing Device
RCB	RFBX	Recording chart battery	Recording Chart Battery
RCC	RFMS	Recorder chart nut/chain	Recorder chart nut/chain
RCF	RFBX	Refrigerated Container	Reefer container GENERAL
RCG	PANL	Roof Corner Gusset	Panel GENERAL
RCH	RFMS	Recording chart	Recording chart
RCI	RAIL	Rail Cone protector Reces	Cut out in Front or door sill
RCK	RAIL	Cam Keeper	Cam Keeper
RCL	RFMS	Recorder clock	Recorder clock
RCM	RFMS	Door curtain assembly	Mod. atmosphere dr. curt. assem.
RCP	RFMS	Recorder Chart Plate	Reefer Machinery GENERAL
RCR	RFMS	Recorder mechanism	Recorder mechanism
RCS	RFMS	Recorder Chart Switch	Reefer Machinery GENERAL
RCU	RFMS	Unloading relay	Unloading relay
RDE	RFMS	Defrost relay	Defrost relay
RDP	PANL	Corner Protection Plate	Corner Protection Plate
REA	RFMS	Temp. Recorder 6 inch	Reefer Machinery GENERAL
REB	RFMS	Temp. Recorder 8 inch	Reefer Machinery GENERAL
REC	RFMS	Mechanical temp. recodr	Mechanical temprature recorder
REF	RFMS	Evaporator Fan Fail Relay	Reefer Machinery GENERAL
RFA	RFMS	Refrigerant R134a Charge	Reefer Machinery GENERAL
RFC	RFMS	Cooling relay	Cooling relay
RFN	RFMS	Refrigerant R409A Charge	Reefer Machinery GENERAL
RHL	RAIL	Rear Header Latch	Rear Header Latch
RHR	RFMS	Heating relay	Heating relay
RIR	RFMS	In range relay	In range relay
RIW	RAIL	Rail Inner Web	Rail Inner Web
RKC	RFMS	Recorder key holder	Recorder key holder
RKH	RFMS	Condenser Fan Relay High	Reefer Machinery GENERAL
RKL	RFMS	Condenser Fan Relay Low S	Reefer Machinery GENERAL
RKY	RFMS	Recorder key/chain	Recorder key/chain
RLA	RAIL	Rail assembly	Rail assembly
RLE	RAIL	Rail - Exterior Component	Rail - Exterior Component
RLF	RAIL	Rail Lower Flange	Rail Lower Flange
RLG	RAIL	Rail Gusset	Rail Gusset
RLI	RAIL	Rail - Interior Component	Rail - Interior Component
RLL	RAIL	Rear Header - Hinge Lug	Rear Header - Hinge Lug
RLR	RFBX	Rail - Rivet Fixing	Reefer container GENERAL
RLT	RAIL	Rail Whole Section	Rail Whole Section
RLW	RAIL	Rail Web	Rail Web
RMR	RFMS	Remote Minitoring Relay	Reefer Machinery GENERAL
RNG	RAIL	Rain gutter	Rain Gutter
ROA	RFMS	Overload Relay - Cond/Eva	Reefer Machinery GENERAL
ROL	RFMS	Compressor overload relay	Compressor overload relay
ROM	RFMS	Overload Relay - 2.8 Amp	Reefer Machinery GENERAL
RON	RFMS	Overload Relay - 1.9 Amp	Reefer Machinery GENERAL
ROT	RFMS	Rotor	Rotor
RPC	RFMS	Partial cool relay	Partial cool relay
RPP	RAIL	Piggypacker Rail	Piggypacker Rail
RPR	RFMS	Phase - reversal relay	Phase - reversal relay
RPS	PANL	Panel Assembly - Steel	Panel GENERAL
RQQ	RFMS	Comprsr cooling rely-quench	Compressor cooling relay-quench
RRM	RFBX	Recess, Modified Atmos. C	Reefer container GENERAL
RRT	RAIL	Swinging/Removable Header	Swinging or Removable Header
RRV	RFMS	Rng Valve	Reed (or ring valves)
RSA	RFMS	Refrigerant System Comple	Reefer Machinery GENERAL

Component code	Assembly	Short Description	Long Description
RSC	RFMS	Reefer Service Charge	Reefer Machinery GENERAL
RSG	PANL	Small Corner Protection P	Panl GENERAL
RSS	RFMS	SSR Relay	Reefer Machinery GENERAL
RTL	RAIL	Goseneck tunnel rail	Gooseneck Tunnel Rail
RTM	RFMS	Timer relay	Timer relay
RTS	RFMS	Rotary Switch	Reefer Machinery GENERAL
RUF	RAIL	Rail Upper Flange	Rail Upper Flange
RUP	RAIL	Rail Doubler Plate	Rail Doubler Plate
RVH	RFMS	Evap Fan High Speed Relay	Reefer Machinery GENERAL
RVL	RFMS	Evap Fan Low Speed Relay	Reefer Machinery GENERAL
SAA	PANL	Sidewall - Complete	Sidewall - Complete
SAB	RFMS	Supply Air Push Button	Reefer Machinery GENERAL
SBR	STAA	Side bar	Side Bar
SBS	STAA	Side bar socket	Side Bar Socket
SBX	MISC	Stacking Cone Box	Misc GENERAL
SCA	STAA	Stacking cones	stacking cones - Flip-lock assembly
SCB	MISC	Stacking Cone - Fliplock	Misc GENERAL
SCC	MISC	Fixed/Removable Stacking	Misc GENERAL
SCD	MISC	Twistlock Chain	Misc GENERAL
SCE	MISC	Twistlock and Chain	Misc GENERAL
SCF	MISC	Twistlock Handle	Misc GENERAL
SCH	STAA	Stanchion chain hook	Stanchion Chain Hook
SCS	MISC	Short Post Top Corner Cas	Misc GENERAL
SDT	RFMS	Defrost trmination switch	Defrost termination switch
SER	RFMS	Elec recdr. sensor return	Electronic recorder sensor -return
SES	RFMS	Elec recdr. sensor supply	Electronic recorder sensor- supply
SFR	STAA	Steel Floor Recess	IICL Flat Rack Manual
SFT	RFMS	Shaft	Shaft
SGI	RFMS	Moisture indicator	Moisture indicator
SGL	RFMS	Sight glass	Sight glass
SGO	RFMS	Oil sight glass	Oil sight glass
SGS	RFMS	Oil sump gasket	Oil sump gasket
SHO	STAA	Dumbell Hamm/Slide Only	IICL Flat Rack Manual
SKP	STAA	Stanchion Pocket	IICL Flat Rack Manual
SLC	STAA	Stanchion Lashing Chain	Stanchion Lashing Chain
SLI	RFMS	Liquid Line Sensor	Reefer Machinery GENERAL
SLL	STAA	Lashing Bar Loop / Ring	IICL Flat Rack Manual
SLS	STAA	Stanchion Lashing System	Stanchion Lashing System
SMD	RFMS	Manual defrost	Manual defrost
SMN	RFMS	On/off main switch	On/off main switch
SNB	RFMS	Snubber	Snubber
SOK	RFMS	Knob - Override Delay Swit	Reefer Machinery GENERAL
SOR	RFMS	Remote monitoring plug	Remote monitoring plug
SPI	PANL	Outer Side post	reinforcing vertical memeber
SPK	RFMS	Condenser pressure switch	Condenser pressure switch
SPO	PANL	side post outter	side post outter
SPR	RFMS	Probe Switch	Reefer Machinery GENERAL
SPS	RFMS	Set point selector digitl	Set point selector (digital)
SPW	RFMS	H2O cool cond pres switch	Water-cooled cond. pres. switch
SRA	RFMS	Control sensor return air	Control sensor (return air)
SRE	RFMS	Record sensor probe	Apparatus that indicates the Temp to the Recorder
SRP	RFMS	Record sensor probe	Record sensor probe
SRS	RFMS	Mod. atmosphr. snap ribbon	Mod. atmosphere snap ribbon
SRT	RFMS	Sensor temperature	Sensor, temperature
SRW	RFMS	Sensor, Water	Reefer Machinery GENERAL
SSA	RFMS	Control sensor supply air	Control sensor (supply air)
SSF	RFMS	Gasket crankshaft assmbly	Gasket, crankshaft assembly
SST	STAA	Stanchion Socket	Stanchion Socket
SSY	RFMS	Simpson sensor	Simpson Sensor
STA	RFMS	Slator	Slator
STC	STAA	Stanchion	Stanchion
STF	RFMS	STF/Stiffener	Stiffener/splitter

Component code	Assembly	Short Description	Long Description
STL	RFMS	Stylus lifter	Stylus lifter
STP	STAA	Stanchion pocket	Stanchion pocket
STY	RFMS	Stylus	Stylus
SVA	RFMS	Voltage Select Switch - 1	Reefer Machinery GENERAL
SVB	RFMS	Voltage Select Switch - 2	Reefer Machinery GENERAL
SVC	RFMS	Volt Sel Switch - Handle	Reefer Machinery GENERAL
SVD	RFMS	Volt. selectn switch door	Voltage selection switch door
SVE	RFMS	Volt Sel Switch - Handle	Reefer Machinery GENERAL
SVH	RFMS	Voltg selectn door hinge	Voltage selection switch dr. hinge
SVK	RFMS	Vltge selectn switch knob	Voltage selection switch knob
SVS	RFMS	Voltage selection switch	Voltage selection switch
SWP	RFMS	Switch Plate	Reefer Machinery GENERAL
SYJ	RFMS	Simpson jack	Thermistor (Simpson) jack
TBA	RFMS	Terminal Block - 6 Way	Reefer Machinery GENERAL
TBB	RFMS	Terminal Block - 8 Way	Reefer Machinery GENERAL
TBC	RFMS	Terminal Block - 26 Way	Reefer Machinery GENERAL
TBE	RFMS	Bent tube (return tube)	Bent tube (return tube)
TCI	RFBX	Top Coving Interior	Reefer container GENERAL
TDF	RFMS	Defrost timer	Defrost timer
TDI	RFMS	Temperature display	Temperature display
TFA	RFBX	T-floor assembly	T-floor assembly
TFB	RFBX	T-floor angle bar	T-floor angle bar
TFC	RFBX	T-floor Casting	T-floor casting
TFD	RFBX	T-floor drain	T-floor drain
TFF	RFBX	T-floor Plate	T-floor plate
TFG	RFBX	T-floor Gutter	T-floor gutter
TFH	RFBX	T-Floor Baffle Plate Hing	Reefer container GENERAL
TFI	RFBX	T-floor strip	T-floor strip
TFL	RFMS	Transformer Cover	Reefer Machinery GENERAL
TFM	RFMS	Power transformer	Power transformer
TFP	RFBX	T-floor plank	T-floor plank
TFS	RFBX	T-floor end seal	T-floor end seal
THB	RFMS	Dial set point thermostat	Dial set point thermostat
THE	RFMS	Dial Set Point Thermostat	Reefer Machinery GENERAL
TIC	TARP	Tir Cord	Tir Cord
TIM	RFMS	Timer	Timer
TIN	RFMS	Inlet Tubing	Inlet tubing
TIR	TARP	Tir Cord Ring	Tir Cord Ring
TMB	RFMS	Terminal Box Assembly	Reefer Machinery GENERAL
TMC	STAA	Twistlock Pivot Bar	IICL Flat Rack Manual
TMF	RFMS	5 Terminal Mounting Kit	Reefer Machinery GENERAL
TMG	RFMS	Terminal Box Gland	Reefer Machinery GENERAL
TMP	RFMS	Terminal mounting plate	Terminal mounting plate
TMS	RFMS	6 Terminal Mounting Kit	Reefer Machinery GENERAL
TMT	RFMS	Thermostat	Thermostat
TNA	TARP	Tarpaulin assembly	Tarpaulin assembly
TNB	TARP	Tarpaulin web	Tarp web providing longitudinal support
TNC	TARP	Tarpaulin Rubber Cord	Tarp GENERAL
TNG	TARP	Grommet	Grommet
TNS	TARP	Customs seal point Tarp.	Tarp customs seal point
TNX	TARP	Tarpaulin Fixing Strip	Tarp GENERAL
TOU	RFMS	Outlet Collector	Outlet collector
TPH	TARP	Tarpaulin Pinhole	Tarp GENERAL
TPI	RFMS	Straight Tube	Straight tube
TPN	RFBX	T Floor Drain Pan	Reefer container GENERAL
TRB	RFMS	Transformer Base	Reefer Machinery GENERAL
TRC	RFMS	Transfresh Valve Cap	Reefer Machinery GENERAL
TRF	RFMS	Transfmr control circuit	Transformer, control circuit
TRR	RFMS	Transfresh Valve Outer Ri	Reefer Machinery GENERAL
TRV	RFMS	Transfresh Valve Complete	Reefer Machinery GENERAL
TSC	RFMS	Reefer Check Socket	Reefer Machinery GENERAL
TSH	RFMS	Tube sheet distributor	Tube sheet distributor

Component code	Assembly	Short Description	Long Description
TSS	RFMS	Temp. simulator switch	Temperature simulator switch
TSW	RFMS	Toggle switch	Operation test (toggle) switch
TTU	RFMS	Thermometer insertn port	Thermometer insertion port
TUA	UNST	Tunnel assembly	Recessed in the understructure to accomdate goosen
TUB	UNST	Tunnel Bolster	trnasverse member supporting the tunnel
TUC	UNST	Tunnel crossmember	Tunnel crossmember
TUP	UNST	Tunnel plate sperator	Plate seperating tunnel recess
TWH	STAA	Twistlock Storage Pocket	IICL Flat Rack Manual
TXD	RFMS	Expansion Valve Door	Reefer Machinery GENERAL
TXH	RFMS	Expansion valv door hinge	Expansion valve door hinge
TXI	RFMS	Expansion Valve Insulatio	Reefer Machinery GENERAL
UAA	UNST	Understructure - Complete	Understructure - Complete
UFK	RFMS	Drain Kazoo	Reefer Machinery GENERAL
USD	RFBX	USDA - Door	Reefer container GENERAL
USH	RFBX	USDA - Door Hinge	Reefer container GENERAL
USS	RFBX	USDA - 1/4 Turn Screw	Reefer container GENERAL
VAP	RFMS	Evaporator access panel	Evaporator access panel
VBA	RFMS	Suction Line Bypass Valve	Reefer Machinery GENERAL
VBP	RFMS	Evap Access Panel - Alter	Reefer Machinery GENERAL
VBS	RFMS	Suction Line Bypass Valve	Reefer Machinery GENERAL
VCC	RFMS	SSV/DSV Connector Cap	Reefer Machinery GENERAL
VCD	RFMS	DSV Connector Cap	Reefer Machinery GENERAL
VCL	RFMS	Charge Port Low Side Cap	Reefer Machinery GENERAL
VCS	RFMS	Liquid Line Service Valve	Reefer Machinery GENERAL
VDC	RFMS	Discharge servc. valv cap	Discharge service valve cap
VDG	RFMS	Discharge Serv Valve Gaug	Reefer Machinery GENERAL
VDH	RFMS	Evaporator Door Hinge - P	Reefer Machinery GENERAL
VDI	RFMS	Discharge service valve	Discharge service valve
VDS	RFMS	Evaporator Door Hinge - S	Reefer Machinery GENERAL
VEX	RFMS	Expansion valve	Expansion valve
VFA	RFMS	Evaporator Fan Motor EFM	Reefer Machinery GENERAL
VFB	RFMS	Evaporator Fan Motor EFM	Reefer Machinery GENERAL
VFC	RFMS	Evaporator Fan Motor	Reefer Machinery GENERAL
VFD	RFMS	EFM Motor Brackets	Reefer Machinery GENERAL
VFE	RFMS	Evaporator Fan Motor #1 -	Reefer Machinery GENERAL
VFH	RFMS	Evaporator Fan Housing	Reefer Machinery GENERAL
VFI	RFMS	Refrigerant Inlet Valve	Reefer Machinery GENERAL
VFO	RFMS	Refrigerant outlet valve	Refrigerant outlet valve
VFV	RFMS	Evaporator Fan Venturi	Reefer Machinery GENERAL
VGA	RFMS	Hot-gas modulating valve	Hot-gas modulating valve
VGB	RFMS	Hot-gas modulating valve	Hot-gas modulating valve body
VGC	RFMS	Bottom Gasket - Evap Pane	Reefer Machinery GENERAL
VGD	RFMS	Hot Gas Modulating Valve	Reefer Machinery GENERAL
VGE	RFMS	Top Gasket - Evap Panel 0	Reefer Machinery GENERAL
VGF	RFMS	Bottom Gasket - Evap Pane	Reefer Machinery GENERAL
VGH	RFMS	Bottom Gasket - Evap Acce	Reefer Machinery GENERAL
VGI	RFMS	End Gasket - Evap Access	Reefer Machinery GENERAL
VGJ	RFMS	Top Gasket - Evap Access	Reefer Machinery GENERAL
VGK	RFMS	End Gasket - Evap Panel 0	Reefer Machinery GENERAL
VGS	RFMS	Hot-gas mod. valve slnd.	Hot-gas modulating val. solenoid
VHA	RFMS	Housing - Evap Fan LH Mod	Reefer Machinery GENERAL
VHB	RFMS	Housing - Evap Fan LH Mod	Reefer Machinery GENERAL
VHC	RFMS	Housing - Evap Fan LH Mod	Reefer Machinery GENERAL
VHD	RFMS	Housing - Evap Fan RH Mod	Reefer Machinery GENERAL
VHL	RFMS	Housing - Evap Fan LH	Reefer Machinery GENERAL
VHR	RFMS	Housing - Evap Fan RH	Reefer Machinery GENERAL
VIB	RFMS	Vibrabsorber	Vibrabsorber
VIT	RFMS	Refrigerant inlet valve	Refrigerant inlet valve
VJT	MISC	Joint Between Components	Joint Between Components
VKC	RFMS	King Valve Cap/Service Ca	Reefer Machinery GENERAL
VLC	RFMS	Liquid Line Service Valve	Reefer Machinery GENERAL
VLL	RFMS	Liquid line service valve	Liquid line service valve

Component code	Assembly	Short Description	Long Description
VLP	RFMS	Evap Access Panel - LH (A	Reefer Machinery GENERAL
VLS	RFMS	Liquid Line Solenoid Valv	Reefer Machinery GENERAL
VLT	RFMS	Liquid Line Solenoid Valv	Reefer Machinery GENERAL
VMA	RFMS	Suction modulating valve	Suction modulating valve
VMB	RFMS	Modulating valve body	Modulating valve body
VMC	RFMS	Suction Modulating Valve	Reefer Machinery GENERAL
VMI	RFMS	Other devices	Other devices (not listed)
VMQ	RFMS	KVQ Valve	Reefer Machinery GENERAL
VMR	RFMS	KVQ Valve Actuator	Reefer Machinery GENERAL
VMS	RFMS	Modulating valve solenoid	Modulating valve solenoid
VOA	RFMS	Quench valve	Quench valve
VOR	RFMS	Oil Relief Valve	Reefer Machinery GENERAL
VQA	RFMS	Quench Valve	Reefer Machinery GENERAL
VQB	RFMS	Quench valve body	Quench valve body
VQS	RFMS	Quench valve solenoid	Quench valve solenoid
VRA	MISC	Vent Ass	Assembly
VRB	MISC	Vent Baffle	Baffle inside the ventilator
VRG	MISC	Ventilator grid	Ventilator Grid
VRP	RFMS	Evap Access Panel - RH	Reefer Machinery GENERAL
VRR	MISC	Vent cover	Vent cover
VSA	RFMS	Suction solenoid valve	Suction solenoid valve
VSB	RFMS	Suction solenoid body	Suction solenoid body
VSC	RFMS	Suction Service Valve Cap	Reefer Machinery GENERAL
VSD	RFMS	Suction Service Valve-2 S	Reefer Machinery GENERAL
VSE	RFMS	Suction Solenoid Valve	Reefer Machinery GENERAL
VSG	RFMS	Suction Service Valve	Reefer Machinery GENERAL
VSL	RFMS	Suct Serv Valve Gauge	Reefer Machinery GENERAL
VSO	RFMS	Suction Service Valve-1 S	Reefer Machinery GENERAL
VSP	RFMS	Suction Solenoid Valve	Reefer Machinery GENERAL
VSS	RFMS	Suction valve solenoid	Suction valve solenoid
VST	RFMS	Suction Solenoid Valve	Reefer Machinery GENERAL
VSU	RFMS	Suction service valve	Suction service valve
VTH	RFMS	Throttling valve	Throttling valve
VVA	RFMS	Valve axle (rod)	Valve axle (rod)
VVD	RFMS	Valve Dsk	Valve disk
VVF	RFMS	Valve foil	Valve foil
VVG	RFMS	Valve gasket	Valve gasket
VVH	RFMS	Valve handle	Valve handle
VVI	RFMS	Valve ring	Valve ring
VVP	RFMS	Valve spring	Valve spring
VVR	RFMS	Valve retainer cam	Valve retainer cam
VVS	RFMS	Valve handle seal	Valve handle seal
VWI	RFMS	Water inlet valve	Water inlet valve
VWO	RFMS	Water outlet valve	Water outlet valve
VXP	RFMS	Evap Access Panel Incl Ai	Reefer Machinery GENERAL
WCC	RFMS	Water Cooled Condenser	Reefer Machinery GENERAL
WCD	RFMS	Water Cooled Condenser Dr	Reefer Machinery GENERAL
WIR	RFMS	Wiring	Wiring
WTK	RFMS	Water tank	Water tank
XCE	CONT	Ext Complete Excl U/side	Cont GENERAL
XCR	CONT	Exterior Sides & U/side	Cont GENERAL
XCU	CONT	Ext Complete Incl U/side	Cont GENERAL
XCX	CONT	Exterior Sides Only	Cont GENERAL
XFR	CONT	Exterior Front Only	Cont GENERAL
XLR	CONT	Exterior Left & Right Sid	Cont GENERAL
XRF	CONT	Exterior Roof Only	Cont GENERAL
XRR	CONT	Exterior Rear Only	Cont GENERAL
XSU	CONT	Ext Sides & U/side	Cont GENERAL
XSW	CONT	Exterior One Side Only	Cont GENERAL
XUS	CONT	Exterior Underside Only	Cont GENERAL
XXX	CONT	Entire container	Cont GENERAL
ZZZ		Not Applicable	Not Applicable

ISO & Non ISO MNR Codes.xls

repair code

Repair Code	Shrt Description	Long Description
AB	AB/Abrs Cln	Abrasive clean and paint
AC	AC/Air Cln	Air clean
AJ	AJ/Adjust	Adjust
BU	BU/Blnk Vnt	Blank out vent
CC	CC/Chem cln	Chemical clean
DF	DF/Drn/fill	Drain and fill
DO	Deodorize	Neutralize odor in container
DR	DR/Drn sys	Drain system
FR	FR/Free	free seized comp.
FT	FT/Refit	Refit removable component
GS	GS/Straighten	Straighten
GT	GT/Tape rem	Glue and tape removal
GW	GW/Strn/wld	Straighten and re-weld
HN	HN/Handling	Handling
IN	IN/Install	Install
IP	IP/Insp	Inspect and report
IT	Insert	Insert
LC	LC/Lube	Lubricate
MD	MD/Mod	Modification
MK	MK/Re Mark	Re-mark
MV	MV/Remove	Remove marks / nails
OP	OP/Over lap	Overlapping part section
OX	Overlay with same matrl	Overlay a surface with thin layer of the same mtrl
PA	PA/Paint	Paint
PI	PI/PTI	Pre trip inspection
PR	PR/Prt Rfrb	Partial refurbishing
PS	Surface Grind & Paint	Surface Preparation (Grind) & Paint
PT	PT/Patch	Patch
PV	PV/Rfrb Rpr	Pre refurbishing repairs
PX	Patch & Foam	Patch and also remove and replace underlying foam
RA	Realign	Realign
RB	RB/Rebuild	Rebuild & strip/clean/lube
RC	RC/Refurb	Refurbishing
RD	RD/Rmv Debr	Remove debris and Disposal
RE	RE/Resecure	Re-secure
RM	RM/Remove	Remove (W/O replace)
RP	RP/Rmv/rpl	Remove and replace
RR	RR/Rmv/refit	Remove and refit
RS	RS/Strn/secr	Straighten and secure comp.
RT	RT/ Re-rate MGW	Re-rate MGW values
RU	RU/Rebush	Re-bush
RW	RW/Rewire	Rewire component or system
SC	SC/Steam Cln	Steam clean
SD	SD/Sand	Sand
SE	SE/Seal hls	Seal holes
SF	Section and Foam	Section and remove/replace foam
SI	SI/Splice	Splice (plate and rivet)
SN	Section	Section
SR	Reseal	
TP	Top Up	
VM	VM/PM	Preventive maintenance
WD	WD/Weld	Weld
WP	WP/sweep	Sweep
WW	WW/wtr Wsh	Water wash
XW	Grind & Weld	Repair by grinding and welding



Institute of International Container Lessors

Technical Bulletin: IICL TB 002, February 2003

**Preferred Electronic
Data Interchange
Standards (EDIS)
for the
Container Industry**

IICL members recognize that sending and receiving parties may select from a number of EDI vendors or may transmit data files without the facility of an EDI vendor. IICL TB 002 does not endorse any one particular EDI vendor or carrier.

IICL TB 002 was prepared under the supervision of a sub-committee chaired by representatives from IICL member companies:

GE SeaCo	A.W. Brassington
Textainer	Anthony Sowry
Transamerica	Richard Cornwall

Copyright © 2002 Institute of International Container Lessors, Ltd.

TABLE OF CONTENTS

	PAGE
Introduction	1
1. External Standards and References	2
1.1 General	2
1.2 References	2
1.3 Data Elements	2
2. Message Types: ANSI and EDIFACT	3
2.1 ANSI Message Types	3
2.1.1 Text File Structure for GATEIN	3
2.1.2 Text File Structure for GATOUT	5
2.1.3 Text File Structure for WESTIM	7
2.1.4 Text File Structure for WESTIMDT	10
2.2 EDIFACT Messages	12
2.2.1 Sample EDIFACT Message	13
2.2.2 EDIFACT Segment Definitions	14
2.2.2.1 UNB Segment -- Interchange Header	14
2.2.2.2 UNH Segment -- Message Header	15
2.2.2.3 DTM Segment -- Date/Time Reference	15
2.2.2.4 RFF Segment -- References	16
2.2.2.5 ACA Segment -- Alternative Currency Amounts	16
2.2.2.6 LBR Segment -- Labor	17
2.2.2.7 EQF Segment -- Equipment Details	17
2.2.2.8 NAD Segment -- Name and Address	18
2.2.2.9 CTA Segment -- Contact	18
2.2.2.10 ERI Segment -- Equipment Related Information	18
2.2.2.11 CUI Segment -- Current Usage Information	19
2.2.2.12 ECI Segment -- Equipment Condition Information	19
2.2.2.13 DAM Segment -- Damage Location ID	19
2.2.2.14 WOR Segment -- Work	20
2.2.2.15 COS Segment -- Cost Per Line Item	20
2.2.2.16 CTO Segment -- Cost Totals	21
2.2.2.17 TMA Segment -- Total Message Amounts	21
2.2.2.18 TAD Segment -- Transaction Details	22
2.2.2.19 TXT Segment -- Text	22
2.2.2.20 UNT Segment -- Message Trailer	22
2.2.2.21 UNZ Segment -- Interchange Trailer	23
2.2.3 GATEIN/GATEOUT	23
2.2.3.1 Branching Diagram	23
2.2.3.2 GATOUT/GATEIN EIR Logical Sequence of Segments	23
2.2.4 WESTIM	24
2.2.4.1 Branching Diagram	24
2.2.4.2 WESTIM Logical Sequence of Segments	24

TABLE OF CONTENTS

	PAGE
3. CEDEX CODES AND DEFINITIONS	25
4. IICL PREFERRED EDIFACT CONTENT	25
4.1 GATEIN/GATOUT Record Format	25
4.2 WESTIM Record Format	25
4.3 WESTIMDT Record Format	26
5. IICL PREFERRED CODES	27
5.1 Component Codes	27
5.1.1 Dry Vans and Open Tops	27
5.1.2 Open Tops Only	30
5.2 Damage Codes	30
5.3 Responsibility Codes	31
5.4 Repair Codes	31
5.5 Material Type Codes	32
5.6 Unit of Measure Specified Codes	32
5.7 Location Codes	33
5.7.1 Location Coding Convention	33
5.7.2 Location Codes	33
5.7.3 Location Coding Explanation	34
5.7.4 Numbering System for Multiple Components	34
6. IICL PREFERRED CODE COMBINATIONS	35
6.1 IICL Preferred Damage & Repair Code Combinations	35
6.2 IICL Preferred Component, Location & Damage Codes: Dry Vans	36
6.3 IICL Preferred Component, Location & Damage Codes: Open Tops	39
7. IICL SUGGESTED ESTIMATE FORMAT & HEADER ITEMS	40
8. FREQUENTLY ASKED QUESTIONS	42
9. DATA ERRORS	43
10. USEFUL LINKS (IICL MEMBERS)	44
11. GLOSSARY	45

INTRODUCTION

The purpose of the Institute of International Container Lessors' Technical Bulletin 002, "Preferred Electronic Data Interchange Standards (EDIS) for the Container Industry" (IICL TB 002), is to provide Electronic Data Interchange (EDI) users within the container industry with a readily available guideline to EDI. IICL TB 002 does not introduce any new standards, nor does it supersede individual client/supplier operational contractual requirements. IICL TB 002 does outline IICL members' "preferred" use of various existing standards and conventions.

This Technical Bulletin has been posted on the Institute's website to benefit the shipping industry, including depots, terminals, shipping lines, leasing companies and EDI vendors. IICL TB 002 is confined to Dry Van and Open Top containers and is intended to offer a "living" guideline that can be easily updated and expanded when required. Other equipment types will be added in subsequent editions.

Users of IICL TB 002 are encouraged to contact IICL with any suggestions or questions concerning the contents of this guideline or other EDI "issues". Please e-mail Gary Danback, Director, Technical Services, at the IICL: edisinquiry@iicl.org.

1. EXTERNAL STANDARDS AND REFERENCES

Current International Standards Organization (ISO) standards that govern container industry Electronic Data Interchange (EDI) are as follows:

1.1 General

ISO 9897:1997(E) provides a system for computer-to-computer communication of commercial transactions related to containers. This document describes the segments and messages used for EDI transmission of container documents developed by Technical Committee ISO/TC 104, *Freight containers*, Subcommittee SC 4, *Identification and communication* of the ISO. It consists of a segment directory for the development of messages and list of eight message types suitable for use in commercial container operations.

1.2 References

ISO 9897:1997(E)	Freight containers – Container equipment data exchange (CEDEX) – General communication codes
ISO 4217:2001	Codes for the Representation of Currencies and Funds
ISO 6346:1995	Freight containers – coding, identification and marking
ISO 7372:1993	Trade data interchange
ISO 9735:2002	Electronic data interchange for administration, commerce and transport (EDIFACT)
	Application level syntax rules
	UN/EDIFACT Segments Directory (Issue 88.1)
	UN/EDIFACT Data Elements Directory (Issue 89.1)
	UN/EDIFACT Composites Directory (Issue 88.1)
	UN/EDIFACT Code List Directory (Issue 88.1)

1.3 Data Elements

Codes for various characteristics of containers that are relevant to the messages described herein are presented in the ISO 9897:1997(E) Annexes:

Data Element	Annex	Data Element	Annex
Damage location	C	Components of container (includes component illustrations)	K
Damage types	D	General Purpose Containers	K. 1
Material types	E	Applicable to Marking	K.4
Repair type	F	Thermal Containers	K.5
Measure unit specifier; repair size dimension and work scales	G	Refrigeration Units	K.6
Responsibility (for repair action)	H	Tank Containers	K.7

Party identification and location	J	Generator Sets & Engines	K.8
		Components of chassis	L
		Alphabetical list of CEDEX codes	M

2. MESSAGE TYPES: ANSI and EDIFACT

Over the years, the container industry has embraced two types of message formats to send electronic data:

ANSI: a simple “flat text file (see glossary under “flat file” for definition) with messages of fixed length. See Section 2.1 following for details.

EDIFACT: messages that utilize segments and data elements. See Section 2.2 following for details.

***NOTE:** A significant advantage of the EDIFACT format is that it does not require a fixed length of message and it is only necessary to send the specific data segments required.*

2.1 ANSI Message Types

The ANSI format requires specific message types, e.g., GATEIN. Some messages are split into two flat files: one for “header” information and one for “detail” information, e.g., WESTIM is actually sent as WESTIM (header information) and WESTIMDT (line item detail). The four message types described below are currently in widespread use in the container industry: GATEIN, GATOUT, WESTIM, and WESTIMDT.

2.1.1 Text File Structure for GATEIN

#	NAME	POSITION	WIDTH	TYPE	DESCRIPTION
1	COMPLETE	1	1	L	Confirms document completed
2	SENT_EIR	2	1	L	Flags F/T before/after send session
3	SENT_DATE	3	8	D	Date message sent
4	REC_EIR	11	1	L	Flags F/T before/after send session
5	REC_DATE	12	8	D	Date message received
6	REC_ADDR	20	9	C	9 digit code of receiving party
7	REC_TYPE	29	1	C	1 digit type code of receiving party
8	EXPORTED	30	1	L	Default F, flags T after export
9	EXPOR_DATE	31	8	D	Date of Export
10	IMPORTED	39	1	L	Default F, flags T after import
11	IMPOR_DATE	40	8	D	Date of Import
12	TRNSXN	48	14	C	EIR Number
13	ADVICE	62	14	C	ACCEPTANCE ADVICE number
14	UNIT_ID_A	76	4	C	e.g.: CONU – prefix
15	UNIT_ID_N	80	6	C	e.g.: 123456 - unit number
16	UNIT_ID_C	86	1	C	e.g.: 1 - check digit
17	EQUIP_TYPE	87	3	C	CON, CHZ or GEN
18	EQUIP_DESC	90	30	C	Text description

Preferred EDIS for the Container Industry

#	NAME	POSITION	WIDTH	TYPE	DESCRIPTION
19	EQUIP_CODE	120	4	C	ISO Code
20	CONDITION	124	10	C	Text description e.g.: DAMAGED
21	COMP_ID_A	134	4	C	Companion Unit Prefix
22	COMP_ID_N	138	6	C	Companion Unit Number
23	COMP_ID_C	144	1	C	Companion Unit Check-Digit
24	COMP_TYPE	145	3	C	Companion Unit Type
25	COMP_DESC	148	30	C	Companion Unit Description
26	COMP_CODE	178	4	C	Companion Unit Code
27	EIR_DATE	182	8	D	Date of EIR (YYYYMMDD)
28	EIR_TIME	190	5	C	Time of EIR (24 hr - local time)
29	REFERENCE	195	35	C	Customer Reference
30	MANU_DATE	230	5	C	Date of Manufacture (MM/YY)
31	MATERIAL	235	2	C	Material
32	WEIGHT	237	10	N	e.g.: 24000
33	MEASURE	247	3	C	e.g.: MGW - Maximum Gross Weight
34	UNITS	250	3	C	e.g.: KGM
35	CSC_REEXAM	253	5	C	ACEP or MM/YY
36	COUNTRY	258	2	C	Chassis license country
37	LIC_STATE	260	2	C	Chassis license state
38	LIC_REG	262	8	C	Chassis license number
39	LIC_EXPIRE	270	5	C	Chassis license expiration MM/YY
40	LSR_OWNER	275	9	C	Lessor Code
41	SEND_ED1_1	284	1	L	T/F for send
42	SSL_LSE	285	9	C	Lessee Code
43	SEND_ED1_2	294	1	L	T/F for send
44	HAULIER	295	9	C	Trucker Code
45	SEND_ED1_3	304	1	L	T/F for send
46	DPT_TRM	305	9	C	Depot Code
47	SEND_ED1_4	314	1	L	T/F for send
48	OTHER1	315	9	C	Other EDI addressee
49	OTHER2	324	9	C	Other EDI addressee
50	OTHER3	333	9	C	Other EDI addressee
51	OTHER4	342	9	C	Other EDI addressee
52	NOTE	351	70	C	Free Text
53	NOTE	421	70	C	Free Text
54	LOAD	491	1	C	Load Status
55	FHWA	492	1	L	FHWA required (F/T)
56	LAST_OH_LOC	493	9	C	Last On-Hire Location
57	LAST_OH_DATE	502	8	D	Last On-Hire Date
58	SENDER	510	15	C	Person sending message
59	ATTENTION	525	15	C	Person receiving message
60	REVISION	540	1	N	Revision number of EIR
61	SEND_ED1_5	541	1	L	T/F for send
62	SEND_ED1_6	542	1	L	T/F for send
63	SEND_ED1_7	543	1	L	T/F for send
64	SEND_ED1_8	544	1	L	T/F for send
65	SEAL_PARTY[1]	545	3	C	Seal Party
66	SEAL_NUMBER[1]	548	15	C	Seal Number

Preferred EDIS for the Container Industry

#	NAME	POSITION	WIDTH	TYPE	DESCRIPTION
67	SEAL_PARTY[2]	563	3	C	Seal Party
68	SEAL_NUMBER[2]	566	15	C	Seal Number
69	SEAL_PARTY[3]	581	3	C	Seal Party
70	SEAL_NUMBER[3]	584	15	C	Seal Number
71	SEAL_PARTY[4]	599	3	C	Seal Party
72	SEAL_NUMBER[4]	602	15	C	Seal Number
73	PORT_FUNC_CODE	617	3	C	Port Function Code
74	PORT_NAME	620	24	C	Port Name
75	VESSEL_NAME	644	35	C	Vessel Name
76	VOYAGE_NUM	679	17	C	Voyage Number
77	HAZ_MAT_CODE	696	10	C	Hazardous Material Code
78	HAZ_MAT_DESC	706	70	C	Hazardous Material Description
79	NOTE	776	70	C	Free Text
80	NOTE	846	70	C	Free Text
81	NOTE	916	70	C	Free Text
82	COMP_ID_A2	986	4	C	Companion Unit Number
83	COMP_ID_N2	990	6	C	Companion Unit Number
84	COMP_ID_C2	996	1	C	Companion Unit Number
85	COMP_TYPE2	997	3	C	Equipment Type of Companion Unit
86	COMP_CODE2	1000	4	C	Companion Equipment Code
87	COMP_DESC2	1004	30	C	Description for Companion Unit
88	SHIPPER	1034	35	C	Shipper Code or Name
89	DRAY_ORDER	1069	35	C	Unused
90	RAIL_ID	1104	17	C	Rail ID
91	RAIL_RAMP	1121	17	C	Rail Ramp Location
92	VESSEL_CODE	1138	9	C	Vessel Identification Code
93	WGHT_CERT	1147	70	C	Weight Certification Free Text
94	WGHT_CERT	1217	70	C	Weight Certification Free Text
95	WGHT_CERT	1287	70	C	Weight Certification Free Text
96	SEA_RAIL	1357	1	L	Ship or Train
97	LOC_IDENT	1358	25	C	Port Number
98	PORT_LOC_QUAL	1383	2	C	Port Location Qualifier
**	Total	**	1384		

2.1.2 Text File Structure for GATOUT

#	NAME	POSITION	WIDTH	TYPE	DESCRIPTION
1	COMPLETE	1	1	L	Confirms document completed
2	SENT_EIR	2	1	L	Flags F/T before/after send session
3	SENT_DATE	3	8	D	Date message sent (YYYYMMDD)-
4	REC_EIR	11	1	L	Flags F/T before/after send session
5	REC_DATE	12	8	D	Date received (YYYYMMDD)
6	REC_ADDR	20	9	C	9 digit code of receiving party
7	REC_TYPE	29	1	C	1 digit type code of receiving party
8	EXPORTED	30	1	L	Default F, flags T after export
9	EXPOR_DATE	31	8	D	Date of Export
10	IMPORTED	39	1	L	Default F, flags T after import

Preferred EDIS for the Container Industry

#	NAME	POSITION	WIDTH	TYPE	DESCRIPTION
11	IMPOR_DATE	40	8	D	Date of Import
12	TRNSXN	48	14	C	EIR Number
13	ADVICE	62	14	C	RELEASE ADVICE number
14	UNIT_ID_A	76	4	C	e.g.: CONU - prefix
15	UNIT_ID_N	80	6	C	e.g.: 123456 - unit number
16	UNIT_ID_C	86	1	C	e.g.: 1 - check digit
17	EQUIP_TYPE	87	3	C	CON, CHZ or GEN
18	EQUIP_DESC	90	30	C	Text description
19	EQUIP_CODE	120	4	C	ISO Code
20	CONDITION	124	10	C	Text description e.g.: DAMAGED
21	COMP_ID_A	134	4	C	Companion Unit Prefix
22	COMP_ID_N	138	6	C	Companion Unit Number
23	COMP_ID_C	144	1	C	Companion Unit Check-Digit
24	COMP_TYPE	145	3	C	Companion Unit Type
25	COMP_DESC	148	30	C	Companion Unit Description
26	COMP_CODE	178	4	C	Companion Unit Code
27	EIR_DATE	182	8	D	Date of EIR
28	EIR_TIME	190	5	C	Time of EIR (24 hr - local time)
29	REFERENCE	195	35	C	Customer Reference
30	MANU_DATE	230	5	C	Date of Manufacture (MM/YY)
31	MATERIAL	235	2	C	Material
32	WEIGHT	237	10	N	e.g.: 24000
33	MEASURE	247	3	C	e.g.: MGW - Maximum Gross Weight
34	UNITS	250	3	C	e.g.: KGM
35	CSC_REEXAM	253	5	C	ACEP or MM/YY
36	COUNTRY	258	2	C	Chassis license country
37	LIC_STATE	260	2	C	Chassis license state
38	LIC_REG	262	8	C	Chassis license number
39	LIC_EXPIRE	270	5	C	Chassis license expiration MM/YY
40	LSR_OWNER	275	9	C	Lessor Code
41	SEND_ED1_1	284	1	L	T/F for send
42	SSL_LSE	285	9	C	Lessee Code
43	SEND_ED1_2	294	1	L	T/F for send
44	HAULIER	295	9	C	Trucker Code
45	SEND_ED1_3	304	1	L	T/F for send
46	DPT_TRM	305	9	C	Depot Code
47	SEND_ED1_4	314	1	L	T/F for send
48	OTHER1	315	9	C	Other EDI addressee
49	OTHER2	324	9	C	Other EDI addressee
50	OTHER3	333	9	C	Other EDI addressee
51	OTHER4	342	9	C	Other EDI addressee
52	NOTE1	351	70	C	Free Text
53	NOTE2	421	70	C	Free Text
54	LOAD	491	1	C	Load Status
55	FHWA	492	1	L	Unused
56	LAST_OH_LOC	493	9	C	Unused
57	LAST_OH_DATE	502	8	D	Unused
58	SENDER	510	15	C	Person sending message

Preferred EDIS for the Container Industry

#	NAME	POSITION	WIDTH	TYPE	DESCRIPTION
59	ATTENTION	525	15	C	Person receiving message
60	REVISION	540	1	N	Revision number of EIR
61	SEND_EDI_5	541	1	L	T/F for send
62	SEND_EDI_6	542	1	L	T/F for send
63	SEND_EDI_7	543	1	L	T/F for send
64	SEND_EDI_8	544	1	L	T/F for send
65	SEAL_PARTY[1]	545	3	C	Seal Party
66	SEAL_NUMBER[1]	548	15	C	Seal Number
67	SEAL_PARTY[2]	563	3	C	Seal Party
68	SEAL_NUMBER[2]	566	15	C	Seal Number
69	SEAL_PARTY[3]	581	3	C	Seal Party
70	SEAL_NUMBER[3]	584	15	C	Seal Number
71	SEAL_PARTY[4]	599	3	C	Seal Party
72	SEAL_NUMBER[4]	602	15	C	Seal Number
73	PORT_FUNC_CODE	617	3	C	Port Function Code
74	PORT_NAME	620	24	C	Port Name
75	VESSEL_NAME	644	35	C	Vessel Name
76	VOYAGE_NUM	679	17	C	Voyage Number
77	HAZ_MAT_CODE	696	10	C	Hazardous Material Code
78	HAZ_MAT_DESC	706	70	C	Hazardous Material Description
79	NOTE	776	70	C	Free Text
80	NOTE	846	70	C	Free Text
81	NOTE	916	70	C	Free Text
82	COMP_ID_A2	986	4	C	Companion Unit Number
83	COMP_ID_N2	990	6	C	Companion Unit Number
84	COMP_ID_C2	996	1	C	Companion Unit Check-Digit
85	COMP_TYPE2	997	3	C	Equipment Type of Companion Unit
86	COMP_CODE2	1000	4	C	Companion Equipment Code
88	SHIPPER	1034	35	C	Shipper Code or Name
89	DRAY_ORDER	1069	35	C	Drayage Order
90	RAIL_ID	1104	17	C	Rail ID
91	RAIL_RAMP	1121	17	C	Rail Ramp Location
92	VESSEL_CODE	1138	9	C	Vessel Identification Code
93	WGHT_CERT	1147	70	C	Weight Certification Free Text
94	WGHT_CERT	1217	70	C	Weight Certification Free Text
95	WGHT_CERT	1287	70	C	Weight Certification Free Text
96	SEA_RAIL	1357	1	L	Train or Boat
97	BILL_LADING	1358	35	C	Bill of Lading ID Number
98	LOC_IDENT	1393	25	C	Port Number
99	PORT_LOC_QUAL	1418	2	C	Port Location Qualifier
**	Total	**	1419		

2.1.3 Text File Structure for WESTIM

#	NAME	POSITION	WIDTH	TYPE	DESCRIPTION
1	COMPLETE	1	1	L	Confirms document completed
2	SENT_EIR	2	1	L	Flags F/T before/after send session
3	SENT_DATE	3	8	D	Date message sent

Preferred EDIS for the Container Industry

#	NAME	POSITION	WIDTH	TYPE	DESCRIPTION
4	REC_EIR	11	1	L	Flags F/T before/after send session
5	REC_DATE	12	8	D	Date received
6	REC_ADDR	20	9	C	9 digit code of receiving party
7	REC_TYPE	29	1	C	1 digit type code of receiving party
8	EXPORTED	30	1	L	Default F, flags T after export
9	EXPOR_DATE	31	8	D	Date of Export
10	IMPORTED	39	1	L	Default F, flags T after import
11	IMPOR_DATE	40	8	D	Date of Import
12	TRNSXN	48	14	C	Estimate Number
13	PTY_RSPONS	62	1	C	to identify party responsible for repair
14	REVISION	63	1	C	Revision number of estimate
15	ESTIM_DATE	64	8	D	Date of estimate
16	UNIT_ID_A	72	4	C	e.g.: CONU – prefix
17	UNIT_ID_N	76	6	C	e.g.: 123456 - unit number
18	UNIT_ID_C	82	1	C	e.g.: 1 - check digit
19	REFERENCE	83	35	C	Customer Reference
20	EQUIP_TYPE	118	3	C	CON, CHZ or GEN
21	EQUIP_CODE	121	4	C	ISO Code
22	EQUIP_DESC	125	30	C	Text description
23	TERM_LOCA	155	9	C	Location of redelivery (depot code)
24	TERM_DATE	164	8	D	Date of redelivery
25	TERM_TIME	172	5	C	Time of redelivery (24 hr - local time)
26	LASTOHLOC	177	9	C	Last On Hire Location (depot code)
27	LASTOHDAT	186	8	D	Last On Hire Date
28	CONDITION	194	10	C	Condition at time of redelivery
29	MANU_DATE	204	5	C	Date of Manufacture (MM/YY)
30	CSC_REEXAM	209	5	C	ACEP or MM/YY
31	LOAD	214	1	C	1 digit status indicator
32	SENDER	215	15	C	Person sending the message
33	ATTENTION	230	15	C	Person to whom message is sent (text)
34	LSR_OWNER	245	9	C	Lessor Code
35	SEND_ED1_1	254	1	L	T/F for send
36	SSL_LSE	255	9	C	Lessee Code
37	SEND_ED1_2	264	1	L	T/F for send
38	HAULIER	265	9	C	Trucker Code
39	SEND_ED1_3	274	1	L	T/F for send
40	DPT_TRM	275	9	C	Depot Code
41	SEND_ED1_4	284	1	L	T/F for send
42	INSURER	285	9	C	Code for Insurance Company
43	SURVEYOR	294	9	C	Code for Survey Company
44	OTHER1	303	9	C	Other EDI addressee
45	TAX_RATE	312	6,3	N	Tax Rate
46	FILLER	318	3	C	Special Use
47	NOTE1	321	70	C	Free Text
48	NOTE2	391	70	C	Free Text
49	NOTE3	461	70	C	Free Text
50	BAS_CURR	531	3	C	Base currency for estimates
51	LABOR_RATE	534	12,2	N	Labor rate

Preferred EDIS for the Container Industry

#	NAME	POSITION	WIDTH	TYPE	DESCRIPTION
52	DPP_CURR	546	3	C	Currency for DPP
53	DPP_AMT	549	10	N	Actual DPP coverage amount
54	WEIGHT	559	10	N	e.g.: 24000
55	MEASURE	569	3	C	e.g.: MGW - Maximum Gross Weight
56	UNITS	572	3	C	e.g.: KGM
57	MATERIAL	575	2	C	Material
58	U_LABOR	577	10,2	N	Labor cost for USER/LESSEE
59	U_MATERIAL	587	10,2	N	Material cost for USER/LESSEE
60	U_HANDLING	597	10,2	N	Handling cost for USER/LESSEE617E
61	U_TAX	607	10,2	N	Tax for USER/LESSEE
62	U_TOTAL	617	10,2	N	Total cost for USER/LESSEE
63	I_LABOR	627	10,2	N	Labor cost for INSURER (DPP)
64	I_MATERIAL	637	10,2	N	Material cost for INSURER (DPP)
65	I_HANDLING	647	10,2	N	Handling cost for INSURER (DPP)
66	I_TAX	657	10,2	N	Tax for INSURER (DPP)
67	I_TOTAL	667	10,2	N	Total cost for INSURER (DPP)
68	O_LABOR	677	10,2	N	Labor cost for OWNER/LESSOR
69	O_MATERIAL	687	10,2	N	Material cost for OWNER/LESSOR
70	O_HANDLING	697	10,2	N	Handling cost for OWNER/LESSOR
71	O_TAX	707	10,2	N	Tax for OWNER/LESSOR
72	O_TOTAL	717	10,2	N	Total cost for OWNER/LESSOR
73	D_LABOR	727	10,2	N	Labor cost for DEPOT
74	D_MATERIAL	737	10,2	N	Material cost for DEPOT
75	D_HANDLING	747	10,2	N	Handling cost for DEPOT
76	D_TAX	757	10,2	N	Tax for DEPOT
77	D_TOTAL	767	10,2	N	Total cost for DEPOT
78	S_LABOR	777	10,2	N	Special billing labor cost for SURVEYOR
79	S_MATERIAL	787	10,2	N	Special billing material cost for SURVEYOR
80	S_HANDLING	797	10,2	N	Special billing handling cost for SURVEYOR
81	S_TAX	807	10,2	N	Special billing tax for SURVEYOR
82	S_TOTAL	817	10,2	N	Special billing total cost for SURVEYOR
83	X_LABOR	827	10,2	N	Deleted
84	X_MATERIAL	837	10,2	N	Deleted material cost for TERMINAL
85	X_HANDLING	847	10,2	N	Deleted handling cost for TERMINAL
86	X_TAX	857	10,2	N	Deleted tax for TERMINAL
87	X_TOTAL	867	10,2	N	Deleted total cost for TERMINAL
88	EST_TOTAL	877	10,2	N	Estimate grand total
89	ADVICE	887	14	C	Acceptance Advice Number
90	EIR_NUM	901	14	C	EIR Receipt Number
91	AUTH_NUM	915	14	C	Work Authorization Number
92	AUTH_AMT	929	10,2	N	Work Authorization Amount
93	AUTH_PTY	939	9	C	Authorizing Party Code
94	AUTH_DATE	948	8	D	Approval Date
95	O_ESTIM_DATE	956	8	D	Original Date of Estimate
96	OTHER2	964	9	C	Send FAX to Address
97	SEND_EDI_5	973	1	L	T/F for send

Preferred EDIS for the Container Industry

#	NAME	POSITION	WIDTH	TYPE	DESCRIPTION
98	SEND_ED1_6	974	1	L	T/F for send
99	SEND_ED1_7	975	1	L	T/F for send
100	SEND_ED1_8	976	1	L	T/F for send
101	NOTE	977	70	C	Free Text
102	NOTE	1047	70	C	Free Text
103	WEIGHT2	1117	7	N	Weight Number 2
104	MEASURE2	1124	3	C	Measure Number 2
105	INVOICE_TYPE	1127	2	C	P1 = power, T1 = tire, O1 = other
106	ODOMETER_HOURS	1129	6	N	Odometer reading
107	OUTSVC_DATE	1135	8	D	Out of service date
108	RETSVC_DATE	1143	8	D	Return to service date
109	OWN_INSP_DATE	1151	8	D	Owner Inspection Date
110	MECHANIC_NAME	1159	25	C	Mechanics Name
111	BILLEE_CODE	1184	15	C	Code assigned by railroad
112	SUB_REPAIR_TYPE	1199	1	C	Sub repair type code
113	OUT_SVC_TIME	1200	5	N	Time unit went out of service
114	RET_SVC_TIME	1205	5	N	Time unit returned to service
**	Total	**	1209		

2.1.4 Text File Structure for: WESTIMDT

#	NAME	POSITION	WIDTH	TYPE	DESCRIPTION
1	EXPORTED	1	1	L	Default F, flags T after export
2	EXPOR_DATE	2	8	D	Date of Export
3	IMPORTED	10	1	L	Default F, flags T after import
4	IMPOR_DATE	11	8	D	Date of Import
5	TRNSXN	19	14	C	ESTIMATE number
6	REVISION	33	1	C	Revision number
7	ESTIM_DATE	34	8	D	Date of document
8	UNIT_ID_A	42	4	C	e.g.: CONU – prefix
9	UNIT_ID_N	46	6	C	e.g.: 123456 - unit number
10	UNIT_ID_C	52	1	C	e.g.: 1 - check digit
11	REFERENCE	53	49	C	Unused
12	LABOR_RATE	102	15,2	N	Labor rate
13	LINE	117	2	C	Line item number
14	REPAIR	119	2	C	Repair code
15	REPEATS	121	3	N	Quantity - number of damages
16	DAMAGE	124	2	C	Damage code
17	COMPONENT	126	3	C	Component code
18	COMP_MATL	129	2	C	Component material
19	LOCATION	131	4	C	Location code
20	LENGTH	135	8,2	N	Length dimension
21	WIDTH	143	8,2	N	Width dimension
22	HEIGHT	151	8,2	N	Height dimension
23	UNITS	159	3	C	Unit of measure
24	HOURS	162	6,2	N	Hours for line item
25	SCALE	168	2	N	Work scale (05,10,15, etc.)
26	MAT_COST	170	15,2	N	Line item material cost

Preferred EDIS for the Container Industry

#	NAME	POSITION	WIDTH	TYPE	DESCRIPTION
27	PTY_RSPONS	185	1	C	Party responsible for line item
28	TAX_RULE	186	1	C	Repair Taxation Scope
29	AAR_JOB	187	4	C	AAR Job Code (from Component in db)
30	JOBCODE	191	9	C	Tariff Job Code
31	DMGREPDESC	200	60	C	Composite Damage, Repair, Component Description
32	OFF_TIRE_SIZE	260	10	C	Size of tire removed
33	OFF_BRAND	270	10	C	Brand of tire removed
34	OFF_SERIAL_NUM	280	15	C	Serial number (DOT) of tire removed
35	OFF_LOT_NUM	295	8	C	Lot number of tire removed
36	OFF_TREAD_DEPTH	303	1	N	Tread depth of tire removed
37	ON_TIRE_SIZE	304	10	C	Size of tire put on
38	ON_BRAND	314	10	C	Brand of tire put on
39	ON_SERIAL_NUM	324	15	C	Serial number (DOT) of tire put on
40	ON_LOT_NUM	339	8	C	Lot number of tire put on
41	ON_TREAD_DEPTH	347	1	N	Tread depth of tire put on
42	SUPPLYTIRE	348	1	L	T if Supply Tire used
43	SUPPLYTIREAMT	349	8,2	N	Supply Tire monetary amount
44	ON_RETREAD_SER	357	15	C	Retread Serial number of tire put on
45	OFF_RETREAD_SER	372	15	C	Retread Serial number of tire removed
**	Total	**	386		

2.2 EDIFACT Message Types

Below is a list of recognized EDIFACT message types (ISO 9735:2002):

- ACCEPT:** ACCEPTANCE ADVICE authorized DEPOT to accept equipment from LESSEE, OWNER or agent. Copy to LESSEE confirms a previous Termination Request.
- CODECO:** Status change similar to gate-in and gate-out.
- COPARN:**
- Confirmation to on-hire or off-hire equipment.
 - Sent by shipping company to initiate termination of the lease of equipment.
 - Sent by leasing company to shipping line and depot confirming the termination of a lease.
 - Sent by shipping company to initiate a contract to lease equipment.
 - Sent by leasing company to shipping line and depot confirming the commencement of a lease.
- DESTIM:** Description of damage and repair methods, authorization for repair works to proceed.
- GATEIN*:** EIR/GATE IN advises OWNER and/or LESSEE that equipment has been redelivered (previously OFHIRI).
- GATOUT*:** EIR/GATE IN advises OWNER and/or LESSEE that equipment has been redelivered (previously ONHIRI).
- RELEAS:** RELEASE ADVICE authorized DEPOT to release equipment to LESSEE/OWNER or agent (trucker). Copy to LESSEE confirms a previous Booking Request.
- TERMIN:** TERMINATION REQUEST functions as an inquiry from the LESSEE to the LESSOR concerning redelivery of equipment in a given port or DEPOT.
- WESTIM*:** REPAIR ESTIMATE transmits details of damage and repair to OWNER and/or LESSEE.
- WINVOI:** WORK INVOICE transmits invoice for repairs to OWNER and/or LESSEE.
- WORDER:** WORK AUTHORIZATION authorizes the DEPOT to proceed with repairs.

* This web site focuses on **GATEIN, GATOUT, WESTIM**, which are the message types currently in widespread use within the container industry.

2.2.1 Sample Edifact message file

UNH+CSIDEVNSA20006+GATEIN:0+TEST 1+0'
DTM+ATR+980424:0000'
RFF+ACC+TEST1'
RFF+EIR+JJJJJSA20006'
NAD+LED+TESTTPARA'
EQF+CON+RWCU: 1234567+2210:20x8.5 Passive Ve+MGW:0:KGM'
ERI+SK+MAN:01'
CUI++TRM:980424'
UNT+9+JJJJJJA20006'
UNH+JJJJJSA20008+GATOUT:0+TEST3+0'
DTM+ATR+980424:0000'
RFF+REL+TEST3'
RFF+EIR+CSIDEVNSA20008'
NAD+LED+TESTTPARA'
EQF+CON+RWCU: 1234567+2210:20x8.5 Passive Ve+MGW:0:KGM'
ERI+SK+MAN:01'
CUI++TRM:980424'
UNT+9+CSIDEVNSA20008'

UNH+TESTMSG00 159+WESTIM:0+.+0'
DTM+ATR+9 80415'
RFF+ADV+REF IN'
RFF+EST+TESTMSG00 1590+980415'
ACA+FRF+STD:0'
ACA+USD+DPP:0'
LBR+ 100.00'
NAD+LED+CSIDEVNSA'
NAD+DED+TESTTPARA'
CTA+FR+:MARK'
CTA+TO+:MR TAN'
EQF+CON+TEST:0000000+22 10:20 DRY AERE+MGW:0:KGM'
ERI+SK+MAN:0 1+ACEP'
ECI+D'
CUI+++E'
DAM+01+BL1N+ARD+BR+SK'
WOR+AB+MMT:0:0:0+1'
COS+00+1.00+15.00+U+100.00+N'
DAM+02+BL2N+CFG+BR+SK'
WOR+BU+MMT: 1200.00:0:0+ 1'
COS+00+1.00+300.00+U+100.00+N'
CTO+U+200.00+3 15.00+0+0+515.00'
TMA+5 15.00'
UNT+24+TESTMSG00 159'

2.2.2 EDIFACT Segment Definitions

2.2.2.1 UNB Segment -- Interchange Header

Function: to start, identify and specify an Interchange

Size Legend: a = alpha character(s)
 n = numeric character(s)
 an = alphanumeric character(s)
 .. = size is variable, up to the maximum number indicated

Ref. #	Data Element Name	Status	Size	Description
S001	SYNTAX IDENTIFIER	Mandatory		
0001	SYNTAX ID	Mandatory	a4	
0002	SYNTAX version number	Mandatory	n1	
S002	INTERCHANGE SENDER	Mandatory		
0004	Sender ID	Mandatory	a9	See ISO 9897 Annex J
0007	ID code qualifier	Conditional	an2	
0008	Address for reverse routing	Conditional	an.. 14	
S003	INTERCHANGE RECIPIENT	Mandatory		
0010	Recipient ID	Mandatory	a9	See ISO 9897 Annex J
0007	ID code qualifier	Conditional	an2	
0014	Routing address	Conditional	an.. 14	
S004	DATE/TIME OF REPARATION	Mandatory		
0017	Date of preparation	Mandatory	n6	
0019	Time of preparation	Mandatory	n4	
0020	INTERCHANGE CONTROL REFERENCE	Mandatory	an.. 14	
S005	RECIPIENT'S REF/PASSWORD	Conditional		
0022	Recipient's ref./password	Mandatory	an.. 14	
0025	Recipient's ref./password qualifier	Conditional	an2	
0026	APPLICATION REFERENCE	Conditional	an.. 14	
0029	PROCESSING PRIORITY CODE	Conditional	a1	
0031	ACKNOWLEDGMENT REQUEST	Conditional	n1	
0032	COMMUNICATIONS AGREEMENT ID	Conditional	an..35	
0035	TEST INDICATOR	Conditional	n1	

2.2.2.2 UNH Segment -- Message Header

Function: to head, identify and specify a Message

Size Legend: a = alpha character(s)
 n = numeric character(s)
 an = alphanumeric character(s)
 .. = size is variable, up to the maximum number indicated

Ref. #	Data Element Name	Status	Size	Description
0062	MESSAGE REFERENCE NUMBER	Mandatory	an..14	Sender's unique message reference, i.e., estimate, EIR or advice number
S009	MESSAGE IDENTIFIER	Mandatory		
0065	Message type identifier	Mandatory	an..6	Type of message transmitted
0052	Message type version number	Mandatory	n..3	Version number of message
0054	Message type release number	Conditional	n..3	
0051	Controlling agency code	Conditional	n..2	
0068	COMMON ACCESS REFERENCE	Conditional	an..35	Key to relate all subsequent transfers of data to the same business file, e.g., customer contract code, etc.
S010	STATUS OF TRANSFER	Conditional		
0070	Sequence message transfer number	Mandatory	n1	Revision number of message

2.2.2.3 DTM Segment -- Date/Time Reference

Function: to specify date, and/or time, or period

Ref. #	Data Element Name	Status	Size	Description
2005	DATE/TIME QUALIFIER	Mandatory	an..3	ATR = Actual Transaction
2001	DATE, CODED	Conditional	n6	YYMMDD
2002	TIME	Conditional	n4	HHMM
2461	TIME ZONE SPECIFIER, CODED	Conditional	an3	

2.2.2.4 RFF Segment -- References

Function: to specify identifying numbers associated with a message

Size Legend: a = alpha character(s)
 n = numeric character(s)
 an = alphanumeric character(s)
 .. = size is variable, up to the maximum number indicated

Ref. #	Data Element Name	Status	Size	Description
1153	REFERENCE QUALIFIER	Mandatory	an..3	EST = Estimate AUT = Authorization ACC = Acceptance REL = Release EIR = Gate In ADV = Advice
C274	REFERENCE	Mandatory		
1154	Reference Number 1	Mandatory	an..35	(From UNH Segment) Estimate Number <i>or</i> Authorization Number <i>or</i> Acceptance Number <i>or</i> Release Number
	Line Number	Conditional		(not used)
C033	DATE/TIME OF REFERENCE	Conditional		
2001	Date	Conditional	n6	YYMMDD
2002	Time	Conditional	n4	HHMM (24 hour)
C282	PERIOD	Conditional		Start/end of period
2001	Date	Mandatory	n6	Start date
2001	Date	Conditional	n6	End date

2.2.2.5 ACA Segment – Alternative Currency Amounts

Function: to indicate the labor rate.

Ref. #	Data Element Name	Status	Size	Description
6345	CURRENCY, CODED	Conditional	a3	e.g.: USD
C275	ALTERNATIVE CURRENCY	Conditional		
6343	Currency qualifier	Conditional	an..3	STD= standard (labor, tax materials), <i>or</i> DPP= DPP coverage
5004	Monetary Amount	Conditional	n..9	Actual amount *

* Note: Up to six digits to the *left* and two to the *right* of the decimal.

2.2.2.6 LBR Segment – Labor

Function: to indicate the labor rate

Size Legend: a = alpha character(s)
 n = numeric character(s)
 an = alphanumeric character(s)
 .. = size is variable, up to the maximum number indicated

Ref. #	Data Element Name	Status	Size	Description
8578	LABOR RATE	Conditional	n..9	Labor cost per hour*

*Note: Up to six digits to the *left* and two to the *right* of the decimal.

2.2.2.7 EQF Segment – Equipment Details

Function: to identify a unit of equipment

Ref. #	Data Element Name	Status	Size	Description
8053	EQUIPMENT QUALIFIER	Mandatory	an..3	CON = Container CHZ = Chassis GEN = Genset REF = Reefer TNK = Tanker
C271	EQUIPMENT	Conditional		
8114	Equipment ID prefix	Conditional	an..4	
8260	Unit/Container ID	Conditional	an..7	6 serial + 1 check
C224	EQUIPMENT SIZE AND TYPE	Conditional		
8155	Size/type code	Conditional	an..4	ISO Code
8154	Size/type text	Conditional	an..35	Text
C272	EQUIPMENT WEIGHT	Conditional		
6153	Weight qualifier	Conditional	an..3	e.g.,MGW=Maximum Gross Weight
6150	Weight	Conditional	n.. 15	
6410	Measure Units Code	Conditional	an..3	e.g., KGM=Kilograms
C186	QUANTITY INFORMATION			Used in TERMIN
6063	Quantity qualifier	Conditional	an..3	TOT = total units OUT = outstanding units
6060	Quantity	Mandatory	n.. 15	
6410	Measure unit specifier	Conditional	an..3	

2.2.2.8 NAD Segment – Name And Address

Function: to specify the name/address and their related function.

Size Legend: a = alpha character(s)
 n = numeric character(s)
 an = alphanumeric character(s)
 .. = size is variable, up to the maximum number indicated

Ref. #	Data Element Name	Status	Size	Description
3035	PARTY QUALIFIER	Mandatory	an..3	Party function within a container transaction
C082	PARTY ID	Mandatory		
3039	Party ID code	Mandatory	a9	See ISO 9897 Annex J
1131	Party code list	Conditional	an2	

2.2.2.9 CTA Segment – Contact

Function: to identify a person or a department to whom communication should be directed

Ref. #	Data Element Name	Status	Size	Description
3139	CONTACT FUNCTION, code	Mandatory	an2	TO=Specific recipient FR=Authorized sender
C056	DEPARTMENT OR EMPLOYEE ID	Conditional		
3413	Department or Employee code	Conditional	an..15	Coded name of signer
3412	Department or Employee name	Conditional	an..35	Text

2.2.2.10 ERI Segment – Equipment Related Information

Function: to give additional information on the equipment

Ref. #	Data Element Name	Status	Size	Description
8511	MATERIAL	Conditional	a2	Main construction material (ISO 9897 Annex E)
C276	DATE	Conditional		
2055	Date/Time qualifier	Conditional	a3	MAN=Manufacture date
2001	Date	Conditional	n..6	YYMMDD (“01” if no date specified)
2002	Time	Conditional	n4	HHMM
8580	CSC REEXAMINATION	Conditional	an4	YYMM or “ACEP”

2.2.2.11 CUI Segment – Current Usage Information

Function: to give information about current usage of the equipment

Size Legend: a = alpha character(s)
 n = numeric character(s)
 an = alphanumeric character(s)
 .. = size is variable, up to the maximum number indicated

Ref. #	Data Element Name	Status	Size	Description
C559	TRANSACTION LOCATION	Conditional		
3227	Location qualifier	Mandatory	a3	TRM=Termination PON=Previous on-hire
3225	Location code	Mandatory	a9	See ISO 9897 Annex J
1131	Location code list code	Conditional	an2	
C276	DATE			
2005	Date/Time qualifier	Conditional	a3	TRM=Termination PON=Previous on-hire
2001	Date	Conditional	n6	YYMMDD
2002	Time	Conditional	n4	HHMM
8533	FULL/EMPTY INDICATOR	Conditional	a1	E=empty L=full or <blank>
C186	QUANTITY INFORMATION	Conditional		
6063	Quantity qualifier	Conditional	an..3	TOT=total units
6060	Quantity	Mandatory	n..15	
6410	Measure unit specifier	Conditional	an..3	

2.2.2.12 ECI Segment – Equipment Condition Information

Function: to give equipment condition information

Ref. #	Data Element Name	Status	Size	Description
8521	CONSOLIDATED CONDITION	Conditional	an..10	Text

2.2.2.13 DAM Segment – Damage Location ID

Function: to specify damage including action taken

Ref. #	Data Element Name	Status	Size	Description
1082	LINE NUMBER	Conditional	n..2	
8522	DAMAGE LOCATION CODE	Conditional	an..4	See ISO 9897 Annex C
8523	COMPONENT CODE	Conditional	a..3	See ISO 9897 Annex K, L
8524	DAMAGE TYPE CODE	Conditional	a..2	See ISO 9897 Annex D
8525	COMPONENT MATERIAL CODE	Conditional	a..2	See ISO 9897 Annex E

2.2.2.14 WOR Segment – Work

Function: to indicate details of work to be executed

Size Legend: a = alpha character(s)
 n = numeric character(s)
 an = alphanumeric character(s)
 .. = size is variable, up to the maximum number indicated

Ref. #	Data Element Name	Status	Size	Description
8526	REPAIR METHOD CODE	Conditional	a2	See ISO 9897 Annex F
C858	REPAIR SIZE DIMENSION	Conditional		
6410	Measure unit specifier	Conditional	an3	See ISO 9897 Annex G
6168	Length dimension	Conditional	n..8	See Note A*
6140	Width dimension	Conditional	n..8	See Note A*
6008	Height dimension	Conditional	n1	always zero
6060	QUANTITY	Conditional	n..3	Number of same type, size, cost damage within the same damage location area.

*Note A. This element may be up to 5 digits to the *left* and 2 digits to the *right* of the decimal.

2.2.2.15 COS Segment – Cost Per Line Item

Function: to indicate cost per damage line for each responsibility

Ref. #	Data Element Name	Status	Size	Description
8531	WORK SCALE	Conditional	n2	Always “00” (See ISO 9897 Annex G)
5533	MAN HOURS	Conditional	n..7	
5534	MATERIAL COST	Conditional	n..10	Or repair flat rate per damage line
3535	RESPONSIBILITY	Conditional	a1	See ISO 9897 Annex H (and “X”= not specified)
3578	LABOUR RATE	Conditional	n..8	(See Note** below)

** Note: The format allows for five (5) digits *before* the decimal point and two (2) digits *after* the decimal point for this field.

2.2.2.16 CTO Segment – Cost Totals

Function: to consolidate a total for each responsibility

Size Legend: a = alpha character(s)
 n = numeric character(s)
 an = alphanumeric character(s)
 .. = size is variable, up to the maximum number indicated

Ref. #	Data Element Name	Status	Size	Description
3535	RESPONSIBILITY	Conditional	al	See ISO 9897 Annex H
5536	LABOR TOTAL	Conditional	n.. 11	Hours times rate*
5537	MATERIAL TOTAL	Conditional	n.. 11	*
5539	HANDLING TOTAL	Conditional	n.. 11	*
5538	TAX	Conditional	n.. 11	All applicable taxes*
5544	TOTAL INVOICE AMOUNT	Conditional	n.. 11	Sum of 5536 to 5539 for each party*

* Note: The format allows for eight (8) digits *before* the decimal point and an optional two (2) digits *after* the decimal point for these fields.

2.2.2.17 TMA Segment – Total Message Amounts

Function: to identify total amounts.

Ref. #	Data Element Name	Status	Size	Description
5356	MESSAGE MONETARY AMOUNT	Conditional	n.. 15	Estimate grand total**
5360	MESSAGE LINE ITEM TOTAL	Conditional	n.. 15	<null>
5348	AMOUNT SUBJECT TO DISCOUNT	Conditional	n.. 15	<null>
5338	AMOUNT SUBJECT TO TAX	Conditional	n.. 15	<null>
5358	MESSAGE ADDITIONAL AMOUNT	Conditional	n.. 15	<null>
5492	AUTHORIZED AMOUNT	Conditional	n.. 15	**
5384	TOTAL AMOUNT PREPAID	Conditional	n.. 15	<null>
5420	(TAX) RATE	Conditional	n.. 15	***

** The format allows for nine (9) digits *before* the decimal point and an optional two (2) digits *after* the decimal point for this field.

*** The format allows for only two (2) digits *before* the decimal and an optional two (2) digits *after* the decimal point for this field.

2.2.2.18 TAD Segment – Transaction Details

Function: to give details of a transaction

Size Legend: a = alpha character(s)
 n = numeric character(s)
 an = alphanumeric character(s)
 .. = size is variable, up to the maximum number indicated

Ref. #	Data Element Name	Status	Size	Description
C040	CARRIER	Conditional		
3127	Carrier, coded	Conditional	a9	See ISO 9897Annex J
1131	Code list identifier	Conditional	an2	<null>
3128	Carrier name	Conditional	an..35	<null>
8213	Transport ID, coded	Conditional	a9	Haulier code See ISO 9897Annex J
C214	SPECIAL SERVICES	Conditional		
7161	Special service code	Mandatory	an..6	<null>
3055	Code list agency	Conditional	an2	<null>
1131	Code list identifier, coded	Conditional	an2	<null>
8212	Transport identification	Conditional	an.. 17	country 2 state 3 license 8 expiration (yy/mm) 4 Inspection needed?(Y/N) 1
8452	Nationality of means of transport	Conditional	an.. 17	
C228	TRANSPORT MEANS	Conditional		
8265	Means of transport, coded	Conditional	an..5	
8264	Means of transport	Conditional	an..35	

2.2.2.19 TXT Segment -- Text

Function: to give information in addition to that in other segments in the service message, as required.

Ref. #	Data Element Name	Status	Size	Description
0077	TEXT REFERENCE CODE	Conditional	an3	CDX
0078	FREE FORM TEXT	Mandatory	an..70	Free text

2.2.2.20 UNT Segment -- Message Trailer

Function: to end and check the completeness of a message

Ref. #	Data Element Name	Status	Size	Description
0074	NUMBER OF SEGMENTS IN MESSAGE	Mandatory	n..6	Includes UNH & UNT
0062	MESSAGE REFERENCE NUMBER		an.. 14	Must match UNH segment above (See Section 2.2.2.2)

2.2.2.21 UNZ Segment -- Interchange Trailer

Function: to end and check the completeness of an interchange

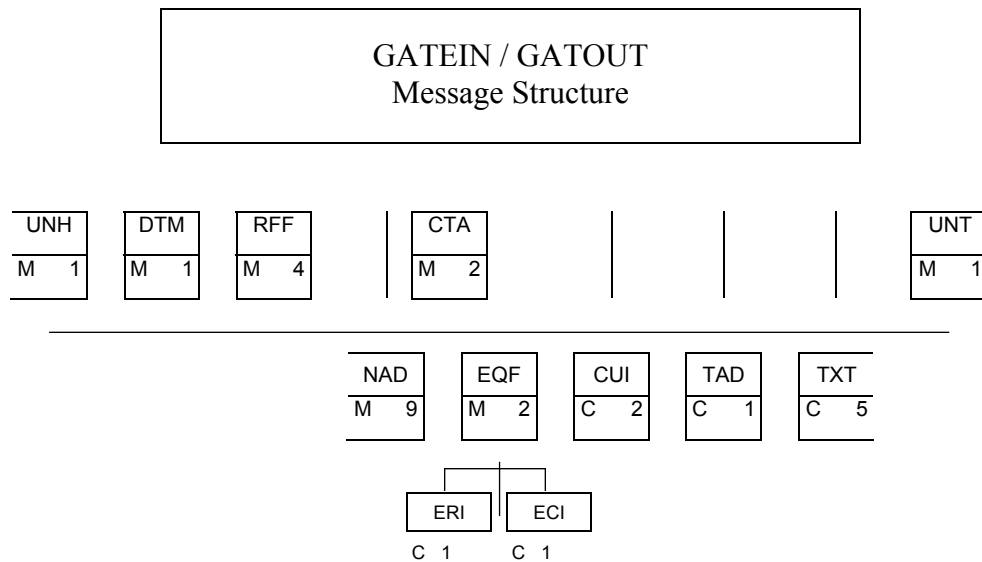
Preferred EDIS for the Container Industry

Size Legend: a = alpha character(s)
 n = numeric character(s)
 an = alphanumeric character(s)
 .. = size is variable, up to the maximum number indicated

Ref. #	Data Element Name	Status	Size	Description
0036	INTERCHANGE CONTROL COUNT	Mandatory	n..6	
0020	INTERCHANGE CONTROL REFERENCE	Mandatory	an..14	Must match UNB segment above (Section 2.2.2.1)

2.2.3 GATEIN / GATOUT

2.2.3.1 Branching Diagram



2.2.3.2 GATOUT/GATEIN EIR Logical Sequence of Segments

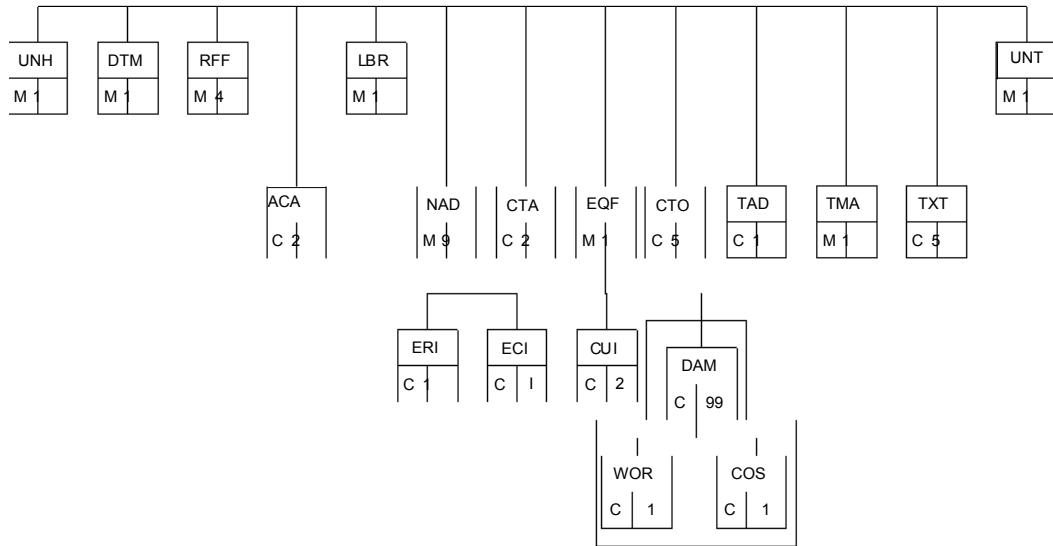
UNH	Message Header
DTM	Date/Time Reference
RFF	Reference
NAD	Name and Address
CTA	Contact
EQF	Equipment
ERI	Equipment Related Information
ECI	Equipment Condition
CUI	Current Usage Information
TAD	Transaction Details
TXT	Text
UNT	Message Trailer

2.2.4 WESTIM

2.2.4.1 Branching Diagram



2.2.4.2 WESTIM Logical Sequence of Segments



a
er

DTM Date/Time Reference

RFF Reference

ACA Alternative Currency Amount

LBR Labour

NAD Name and Address

CTA Contact

EQF Equipment

ERI Equipment Related Information

ECI Equipment Condition

CUI Current Usage Information

DAM Damage

WOR Work

COS Cost

CTO Cost Totals

TAD Transaction Details

TMA Total Message Amount

TXT Text

UNT Message Trailer

3.0 CEDEX CODES AND DEFINITIONS

The complete set of ISO 9735 :2002 Cedex Codes and Definitions that reference the following items:

Equipment Types
Materials
Currency
Responsibility
Component
Damage
Repair

may be purchased through the following organizations:

American National Standards Institute -- www.ansi.org

International Maritime Organization -- www.imo.org

International Standards Organization -- www.iso.org

4.0 IICL PREFERRED EDIFACT CONTENT

4.1 GATEIN/GATOUT Record Format

Name	Description
Trans Number	EIR Number
Advice	Acceptance Advice Number
Unit ID Prefix	E.g.: CONU – prefix
Unit ID Number	E.g.: 123456 – unit number
Unit ID Check Digit	E.g.: 1 – check digit
Condition	Text description e.g.: Damage, Complete, Available
EIR date	Date of EIR (YYYYMMDD)
EIR Time	Time of EIR (24 hr – local time) e.g.: 12:01
LSR Owner	Lessor EDI Code
DPT TRM	Depot EDI Code

4.2 WESTIM Record Format

Name	Description
Trans Number	EIR Number
Revision	Revision number of estimate
Estimate Date	Date of estimate (YYYYMMDD)
Unit ID Prefix	E.g.: CONU – prefix
Unit ID Number	E.g.: 123456 – unit number
Unit ID Check Digit	E.g.: 1 – check digit
Condition	Text description e.g.: D, F, G or E

Preferred EDIS for the Container Industry

Name	Description
LSR Owner	Lessor EDI Code
DPT TRM	Depot EDI Code
Base Currency	Base currency for estimates
Auth Num*	Work Authorization Number
Auth Amt*	Work Authorization Amount
Auth Pty*	Authorizing Party Code
Auth Date*	Approval Date (YYYYMMDD)

*Auth Fields are optional and only used if estimate has been customer authorized / approved

4.3 WESTIMDT Record Format

Name	Description
Trans Number	EIR Number
Revision	Revision number of estimate
Estimate Date	Date of estimate (YYYYMMDD)
Unit ID Prefix	Eg: CONU – prefix
Unit ID Number	Eg: 123456 – unit number
Unit ID Check Digit	Eg: 1 – check digit
Labor Rate	Labor Rate
Line	Line Item Number
Repair	Repair Code
Repeats	Quantity – number of damages
Damage	Damage Code
Component	Component Code
Location	Location Code
Length	Length Dimension
Width	Width Dimension
Units	Unit of Measure
Hours	Hours for Line Item
Material Cost	Line Item Material Cost
Party Responsible	Party responsible for line item

5.0 IICL PREFERRED CODES

The ISO Cedex codes in the container industry include a large number of conflicting and or redundant codes. Use of these “IICL Preferred” codes may assist all concerned to maximize the benefit from a consistent use of codes. The following IICL preferred codes are detailed in this section:

- | | |
|--|--|
| <ul style="list-style-type: none"> 5.1 Component codes <ul style="list-style-type: none"> 5.1.1 Dry Vans & Open Tops 5.1.2 Open Tops Only 5.2 Damage codes 5.3 Responsibility codes 5.4 Repair codes 5.5 Material type codes | <ul style="list-style-type: none"> 5.6 Unit of measure specifier codes 5.7 Location codes <ul style="list-style-type: none"> 5.7.1 Location Coding Convention 5.7.2 Location Codes 5.7.3 Location Coding Explanation 5.7.4 Numbering System for Multiple Components |
|--|--|

5.1 IICL Preferred Component Codes

5.1.1 Dry Vans and Open Tops

Assembly	Component	Component Code
Rear	CAM Keeper	RCK
Rear	Cone (damage) Protector Recess	RCI
Rear	Corner Fitting	CFG
Rear	Corner Post - 'J' bar	CPJ
Rear	Corner Post - inner	CPI
Rear	Corner Post - outer	CPO
Rear	Corner Post (only)	CPS
Rear	Corner Post Assembly	CPA
Rear	Door Complete - with hardware	DAH
Rear	Door Complete - without hardware	DAA
Rear	Hinge Lug - Corner Post	CPL
Rear	Hinge Pin	HGP
Rear	Rails - Top and Bottom	RLA
Doors	Consolidated Data Plate	MPD
Doors	Gasket	GTO
Doors	Gasket Assembly (with strip)	GTA
Doors	Gasket Retainer	GRS
Doors	Handle Catch	DHC
Doors	Handle Retainer	DHR
Doors	Hardware Fasteners	HWR
Doors	Hinge Assembly	HGH
Doors	Holdback Cord	DRT
Doors	locking Bar Assembly	LBA

Preferred EDIS for the Container Industry

5.1.1. Dry Vans and Open Tops, continued		
Assembly	Component	Component Code
Doors	Panel	PAA
Doors	Security (TIR) Plate or Lug	DPL
Doors	Stiffener - Bottom edge	DSB
Doors	Stiffener - Center (line) edge	DSC
Doors	Stiffener - Hinge side edge	DSH
Doors	Stiffener - Top edge	DST
Locking Bar Assembly	Bracket	LBB
Locking Bar Assembly	Bushing	
Locking Bar Assembly	CAM	LBC
Locking Bar Assembly	Guide	LBG
Locking Bar Assembly	Handle	LBH
Locking Bar Assembly	Handle Lug	LBL
Locking Bar Assembly	Locking Bar Tube/Rod	LBR
Locking Bar Assembly	Locking Handle Assembly	DHL
Side Wall	Bottom Rail - Doubler Plate	RUP
Side Wall	Bottom Rail - Lower Flange	RLF
Side Wall	Bottom Rail - Upper Flange	RUF
Side Wall	Door Holdback Retainer	DRT
Side Wall	Panels	PAA
Side Wall	Rail Reinforce Gusset - Top and Bottom	RLG
Side Wall	Rails - Top and Bottom	RLA
Side Wall	Ventilator Assembly	VRA
Front	Cone (damage) Protector Recess	RCI
Front	Corner Post (only)	CPS
Front	Corner Post Assembly	CPA
Front	Corner Fitting	CFG
Front	Panel	PAA
Front	Rail Reinforce Gusset - Top and Bottom	RLG
Front	Rails - Top and Bottom	RLA
Roof	Header (extension) Plate - Front, Rear	HEP
Roof	Header Reinforce Gusset	RLG
Roof	Panel	PAA
Roof	Roof Steel Corrugated - complete	PSC
Roof	Roof Steel Flat (complete) including bows	RAA
Floor	Floor - Plywood	FPP
Floor	Floor - Plank	FPB
Floor	Floor - Laminated	FLP
Floor	Floor - Steel	FSP
Floor	Threshold Plate	FTP

Preferred EDIS for the Container Industry

5.1.1. Dry Vans and Open Tops, continued		
Assembly	Component	Component Code
Floor	Hat Section/Floor Center Rail	FHS
Floor	Screws, Fasteners	HWR
Interior	Lashing Bar - Corner Posts	LSB
Interior	Lashing Rings - Top and Bottom Rails	LSR
Under Frame	Crossmember	CMU
Under Frame	Floor Support Angle	FSA
Under Frame	Fork Lift Pocket Assembly	FLA
Under Frame	Outrigger	CMO
Under Frame	Tunnel Assembly	TUA
Crossmember	Upper Flange	CMU
Crossmember	Lower Flange	CML
Fork Lift Pocket Assembly	Lower Flange	FLL
Fork Lift Pocket Assembly	Side	FLT
Fork Lift Pocket Assembly	Strap	FLS
Fork Lift Pocket Assembly	Top Plate	FLP
Fork Lift Pocket Assembly	Upper Flange	FLU
Tunnel Assembly	Bolster	TUB
Tunnel Assembly	Plate	TUP
Tunnel Assembly	Rail	RTL
Markings	ACEP	MCE
Markings	Caution Marking	MCA
Markings	Country Code	MCC
Markings	Full Set - All Markings	MFS
Markings	Height Markings	MHT
Markings	Owner's Code	MOC
Markings	Owner's Logo	MOL
Markings	Serial Number and Check Digit	MSN
Markings	Single Character (digits)	MSD
Markings	Size and Type Marking	MST
Markings	UIC Decal	MUI
Markings	Unspecified (other) Marking	MRU
Markings	Weigh (mass) Panel	MMI
Miscellaneous	Cargo Container	MCO

5.1.2 Open Tops Only

Assembly	Component	Component Code
Rear	Header Pin	HGP
Rear	Header Pin Chain	HPC
Rear	Header Pin Handle	HPH
Rear	Top Rail - Swinging	RRT
Roof (Top)	Tarpaulin Assembly	TNA
Tarpaulin Assembly	Tarpaulin Grommet (yelllets)	TNG
Tarpaulin Assembly	TIR Cable (customs) Seal	TNS
Tarpaulin Assembly	TIR Cord	TIC
Top Rails/Side Wall	TIR Cord Ring	TIR
Interior	Roof Bow	RBO
Interior	Roof Bow Holder	RBH
Interior	Roof Bow - Swinging	RBO

5.2 IICL Preferred Damage Codes

Damage Description	Code
Bent	BT
Bowed	BW
Broken/Split	BR
Burned	BN
Contaminated	CT
Corroded/Rusted	CO
Cracked	CK
Cut	CU
Debris/Dunage	DB
Delaminated	DL
Dent	DT
Dirty	DY
Foreign Marking(s)	ML
Gouged	GD
Holed	HO
Improper Repair	IR

Damage Description	Code
Loose Component	LO
Missing/Lost Component	MS
Nails In Floor	NL
No Damage Code	ZZ
Odor	OR
Oil - Saturated	OL
Oil - Stains	OS
Out of Inspection Date	OD
Paint Failure	PF
Remove Glue & Tape	GT
Rotted	RO
Scratched/Abraded	SA
Seized, Frozen	FZ
Wear and Tear	WT
Wrong Material	WM

5.3 IICL Preferred Responsibility Codes

Description	Code
Central Billing	S
Depot	D
DPP/Insurance	I
Joint survey allocation assigned	J
Lessee Refused	R
Owner/Lessor	O
Third Party	T
User/Lessee	U

5.4 IICL Preferred Repair Codes

Damage Description	Code
Abrasive Clean and Paint	AB
Chemical Clean	CC
Deodorize	DO
Free Seized Component(s)	FR
Grind and Weld	XW
Insert	IT
Install	IN
Lubricate	LC
Paint	PA
Partial Refurbishment	PR
Abrasive Clean and Paint	AB
Patch	PT
Preventive Maintenance	VM
Recondition/Refurbish	RC
Refit	FT
Remove and Refit or Reinstall	RR
Remove and Replace Component(s)	RP
Remove Component (without replacement)	RM
Remove Glue and/or Tape	GT
Remove Marks/Nails	MV
Resecure	RE
Sand	SD
Seal or Reseal/Caulk or Recaulk	SE
Section	SN
Spot Cleaning	
Steam Clean	SC
Straighten	GS
Straighten and Secure component(s)	RS

Preferred EDIS for the Container Industry

5.4 Repair Codes continued	
Damage Description	Code
Straighten and Weld	GW
Surface Preparation (Grind) and Paint	PS
Sweep	WP
Water Wash	WW
Weld	WD

5.5 IICL Preferred Material Type Codes

Description	Code
Aluminum	AU
Aluminum - Pre painted	AP
Plymetal	PM
Plywood	PP
Rubber	RU
Steel	SU
Steel - Carbon	ST
Steel - Corten	SK
Steel - Galvanized	SG
Wood	WU
Wood - Hard Laminated Plank	LH
Wood - Hard Plank	WH
Wood - Soft Laminated Plank	LS
Wood - Soft Plank	WS

5.6 IICL Preferred Unit of Measure Specifier Codes

Description/Abbreviation	Code
Centimeter/CM	CMT
Feet/FT	FOT
Inches/IN	INH
Meters/M	MTR
Millimeters/MM	MMT

5.7 IICL Preferred Location Codes

5.7.1 Location Coding Convention

The location code consists of three parts:

1. A 1200 x 1200 mm (4' x 4') numerical square system to identify damage to any face of the container
2. A component numbering system to identify damage to crossmembers, roof bows and other similar components, which are integral parts of a container
3. Use of a four (4) character ISO CEDEX code

5.7.2 Location Codes

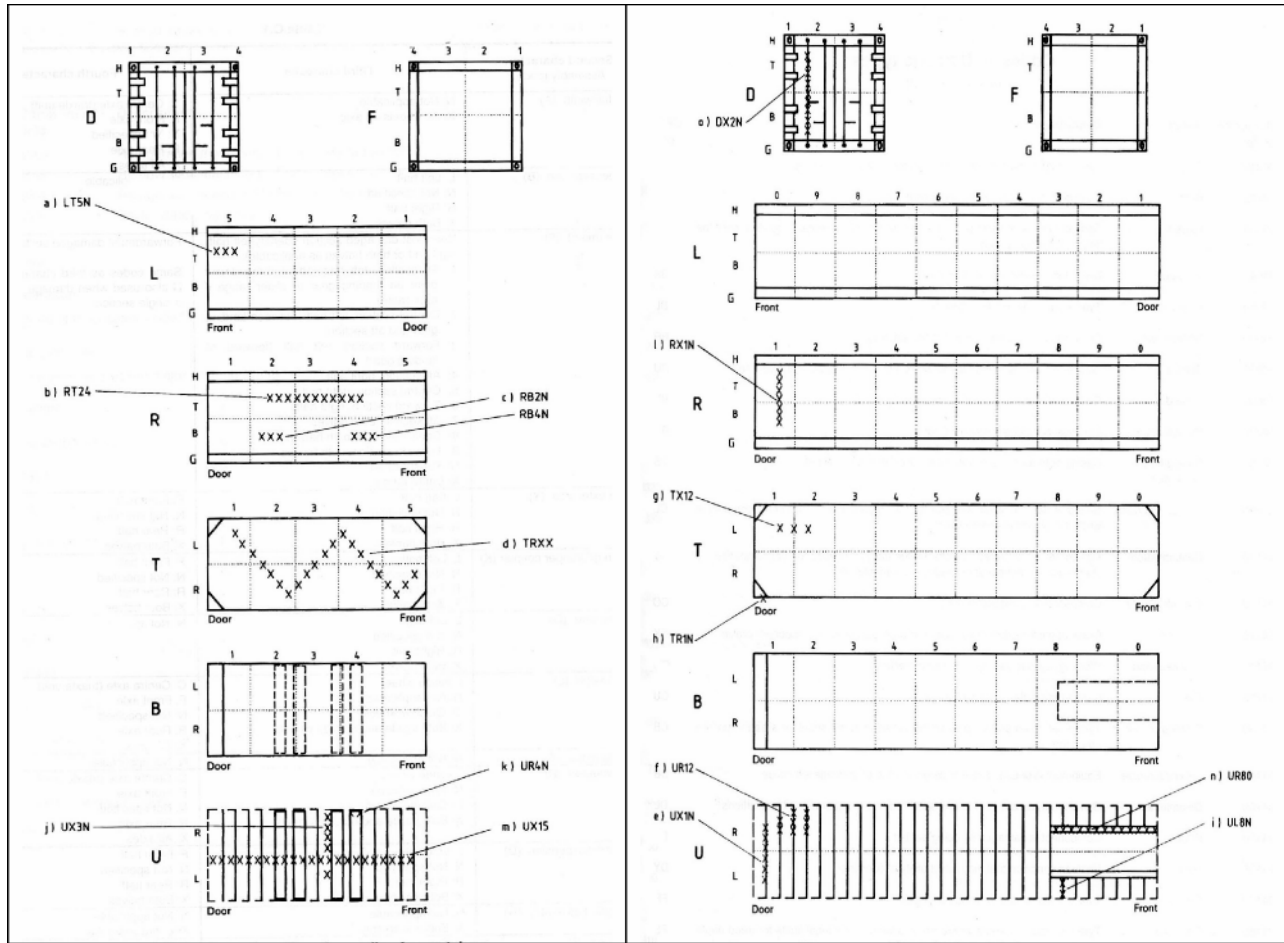
First Character: Will identify the appropriate face of the container.	
Description	Code
Right Side	R
Left Side	L
Roof or Top	T
Bottom (Floor)	B
Front End	F
Door End (Rear)	D
Understructure	U
Whole Container	X
Container Interior	I
Container Exterior	E

Second Character: Will identify the segment of the container where the damage is located.	
Description	Code
Upper Component	H
Lower Component	G
Top Half	T
Bottom Half	B
Left Half	L
Right Half	R
Both Halves	X

- 1 - for the left hand side corner post
- 2 - for the left half
- 3 - for the right half
- 4 - for the right hand side corner post

For all containers the right and left sides, the roof, the floor and the understructure are divided into equal sections:

- 20' containers: 5 sections numbered 1 - 5
- 40' containers: 10 sections numbered 1 - 9, then 0



5.7.3 Location Coding Explanation

- If the damage covers only one section, the 3rd character will identify the appropriate section and the 4th character will be designated with "N".
NOTE: the "N" in the location code can only be used as the 4th character of the location code and never as the 2nd or 3rd character for dry freight and open top containers.
- If the damage covers several adjacent sections, the first and last section numbers are used.
- If the damage covers the entire length of the container face, the 3rd and 4th characters are designated with "X".

5.7.4 Numbering System for Multiple Components

- Some components can be more precisely identified in the "comments" entry field in numerical order.
- Components of the door and the front end, such as locking bars or front (side) posts, are numbered consecutively from left to right from the door end.
- Components contained in all the other faces, such as roof bows, side posts and crossmembers, are numbered consecutively from the door of the container,

Preferred EDIS for the Container Industry

with the exception of the fork lift pockets, numbered "1" and "2" designed to lift the container loaded and "3" and "4" for those designed to lift the container empty. Fork lift pocket component walls "1" and "3" are the closest to the door end.

- Should numerous crossmembers or roof bows require repair or replacement and share a common damage code and repair code, they must be identified as a single repair item using one location code. Individual crossmembers or roof bows affected must be identified in the "comments" entry field, as shown in the example which follows:

To identify crossmembers 1, 3, 6, 9 - CMA 1, 3, 6, 9

Note: If multi-damages on one sub-assembly or component are of the same nature and size, and require the same repair method, then such damages can be recorded using the extreme location coordinates relative to the damage locations, i.e., with example (*) on page 11, if the damage type, size and repair method are the same, the location code for one line estimate entry would be RT24.

6.0 IICL PREFERRED CODE COMBINATIONS

6.1 IICL Preferred Damage and Repair Code Combinations

Damage Codes		Repair Codes
BN	Burned	AB IN PS RC SN
BR	Broken, Split	IN RE RP SN
BT	Bent	GS IT SN
BW	Bowed	GS IN SN
CK	Cracked	IN SN
CL	Compression Line	GS
CO	Corroded, Rusted	AB FR PR PS RC
CT	Contaminated	CC SC WW
CU	Cut	GW IT SN
DB	Debris, Dunnage	RD
DL	Delaminated	IN RE RP SN
DT	Dent	GS IT SN
FZ	Frozen, Seized	FR
GD	Gouged	IT
HO	Holed	IT IN SN
IR	Improper Repair	IT IN RP SN
LO	Loose Component	RE
ML	Foreign Markings	MK
MS	Missing/Lost Component	IN
OR	Odor	CC SC WW
OS	Oil Stains	CC SC

Preferred EDIS for the Container Industry

6.1 IICL Preferred Damage and Repair Code Combinations (continued)		
Damage Codes		Repair Codes
NL	Nails in Floor	MV
PF	Paint Failure	PR PS RC
PH	Pin Holes	PT
RO	Rotted	IT IN SN
WT	Wear & Tear	GS GW IT IN PT RP RR SN WD

6.2 IICL Preferred Component, Location & Damage Codes: Dry Vans

Assembly	Component	Component Code	Location Code	Damage Codes
Rear	CAM Keeper	RCK	DX	BR BT IR WT MS
Rear	Cone (damage) Protector Recess	RCI	DX	BT CO CU DT HO IR WT
Rear	Corner Fitting	CFG	DX	CK IR WT
Rear	Corner Post - "J" bar	CPJ	DX	BT BW CO CU DT IR WT
Rear	Corner Post - inner	CPI	DX	BT BW DT IR WT
Rear	Corner Post - outer	CPO	DX	BT BW DT GD IR WT
Rear	Corner Post (only)	CPS	DX	BT BW DT GD IR WT
Rear	Corner Post Assembly - including costs	CPA	DX	BT BW DT GD IR WT
Rear	Door Complete - with hardware	DAH	DX	BT BW CO CU DT IR WT MS
Rear	Door Complete - without hardware	DAA	DX	BT BW CO CU DT IR WT MS
Rear	Hinge Lug - Corner Post	CPL	DX	BT CK CO MS
Rear	Hinge Pin	HGP	DX	BT FZ MS
Rear	Rails - Top and Bottom	RLA	DX	BT BW CO CU DT HO IR WT
Doors	Consolidated Data Plate	MPD	DX	CO CU LO MS
Doors	Gasket	GTO	DX	BN CU IR WT MS
Doors	Gasket Assembly (with strip)	GTA	DX	BN CU IR LO WT MS
Doors	Gasket Retainer	GRS	DX	BT CO IR LO WT MS
Doors	Handle Catch	DHC	DX	BT IR LO WT MS
Doors	Handle Retainer	DHR	DX	BU IR LO WT MS
Doors	Hardware Fasteners	HWR	DX	CO IR WT MS
Doors	Hinge Assembly	HGH	DX	BR BT CO CU FZ IR WT MS
Doors	Holdback Cord	DRT	DX	BR IR WT MS MS
Doors	Locking Bar Assembly	LBA	DX	BT CO IR LO MS WT MS
Doors	Panel	PAA	DX	BT BW CO CU DT IR WT
Doors	Security (TIR) Plate or Lug	DPL	DX	BT CO CU WT MS
Doors	Stiffener - Bottom edge	DSB	DB	BT CO CU IR WT
Doors	Stiffener - Center (line) edge	DSC	DX	BT CO CU IR WT
Doors	Stiffener - Hinge side edge	DSH	DX	BT CO CU IR WT
Doors	Stiffener - Top edge	DST	DH	BT CO CU IR WT
Locking Bars	Bracket	LBB	DX	BR BT CO CU IR LO WT MS

Preferred EDIS for the Container Industry

6.2 Dry Vans, continued				
Assembly	Component	Component Code	Location Code	Damage Codes
Locking Bars	Bushing	DHB	DX	BR CK FZ IR MS
Locking Bars	Cam	LBC	DX	BT LO MS
Locking Bars	Guide	LBG	DX	BR BT CO CU IR LO WT MS
Locking Bars	Handle	LBH	DX	BT IR LO MS
Locking Bars	Handle Lug	LBL	DX	IR WT MS
Locking Bars	Locking Bar Tube/Rod	LBR	DX	BT CO CU IR WT
Locking Bars	Locking Handle Assembly	DHL	DX	BT IR LO WT MS
Sides	Bottom Rail - Double Plate	RUP	BX	BT CO CU IR WT MS
Sides	Bottom Rail - Lower Flange	RLF	GX	BT CO CU IR WT
Sides	Bottom Rail - Upper Flange	RUF	GX	BT CO CU IR WT
Sides	Door Holdback Retainer	DRL	XX	BT CO WT MS
Sides	Panels	PAA	XX	BT BW CO CT CU DT HO IR PF WT
Sides	Rail Reinforce Gusset - Top and Bottom	RLG	XX	BT CO CU IR WT MS
Sides	Rails - Top and Bottom	RLA	XX	BT BW CO CU DT HO IR WT
Sides	Ventilator Assembly	VRA	XH	BT CO CK IR LO WT MS
Front End	Cone (damage) Protector Recess	RIC	FG	BT CO CU DT HO IR WT
Front End	Corner Post (only)	CPS	FX	BT BW DT GD IR WT
Front End	Corner Post Assembly	CPA	FX	BT BW DT GD IR WT
Front End	Corner Fitting	CFG	FX	CK IR MS
Front End	Panel	PAA	FX	BT BW CO CT CU DT HO IR PF WT
Front End	Rail Reinforce Gusset - Top and Bottom	RLG	FX	BT CO CU IR WT MS
Front End	Rails - Top and Bottom	RLA	XX	BT BW CO CU DT HO IR WT
Roof	Header (extension) Plate - Front & Rear	HEP	TX	BT BW CO CU DT IR WT
Roof	Header Reinforce Gusset	RLG	TX	BT CO CU DT HO IR WT MS
Roof	Panel	PAA	TX	BT BW CO CT CU DT HO IR PF WT
Roof	Roof Steel Corrugated - complete	PSC	TX	BT BW CO CU DT HO IR PF WT
Roof	Roof Steel Flat (complete) including bows	RAA	TX	BT BW CO CU DT HO IR PF WT
Floor	Floor - Plywood	FPP	IX	BR BN CT DB DL DY HO IR LO CK NL OL OS RO WT WM
Floor	Floor - Plank	FPB	IX	BR BN CT DB DL DY HO IR LO CK NL OL OS RO WT WM

Preferred EDIS for the Container Industry

6.2 Dry Vans, continued				
Assembly	Component	Component Code	Location Code	Damage Codes
Floor	Floor - Laminated	FLB	IX	BR BN CT DB DL DY HO IR LO CK NL OL OS RO WT WM
Floor	Floor - Steel	FSP	IX	BT CO CT CU DB DT DY IR OS WT
Floor	Threshold Plate	FTP	IX	BT CO CU HO IR LO WT MS
Floor	Hat Section/Floor Center Rail	FHS	IX	BR BT CO IR WT MS
Floor	Screws, Fasteners	HWR	IX	CO LO WT MS
Interior	Lashing Bar -Corner Posts	LSB	IX	BT CU IR WT MS
Interior	Lashing Rings - Top and Bottom Rails	LSR	IX	BT CU IR WT MS
Under Frame	Crossmember Assembly	CMA	UX	BT BW CO CU IR LO WT MS
Under Frame	Floor Support Angle	FSA	UX	BT CO CU IR WT MS
Under Frame	Fork Lift Pocket Assembly	FLA	UX	BT BW CO CU IR WT
Under Frame	Outrigger	CMO	UX	BT BW CO CU IR LO WT MS
Under Frame	Tunnel Assembly	TUA	UX	BT BW CO CU HO IR WT
Crossmember	Upper Flange	CMU	UX	BT BW CO CU IR WT
Crossmember	Lower Flange	CML	UX	BT BW CO CU IR WT
Fork Pocket	Lower Flange	FLL	UX	BT BW CO CU IR WT
Fork Pocket	Side	FLT	UX	BT BW CO CU IR WT
Fork Pocket	Strap	FLS	UX	BT CO CU IR WT MS
Fork Pocket	Top Plate	FLP	UX	BT BW CO CU IR WT
Fork Pocket	Upper Flange	FLU	UX	BT BW CO CU IR WT
Tunnel	Bolster	TUB	UX	BT BW CO HO IR WT
Tunnel	Plate	TUP	UX	BT CO CU IR WT
Tunnel	Rail	RTL	UX	BT BW CO HO IR WT
Markings	ACEP	MCE	DX	IR LO ML OD SA WT MS
Markings	Caution Marking	MCA	XX	IR LO ML SA WT WM MS
Markings	Country Code	MCC	XH	IR LO ML SA WT WM MS
Markings	Full Set - All markings	MFS	XX	IR LO ML SA WT WM MS
Markings	Height Markings	MHT	XH	IR LO ML SA WT WM MS
Markings	Owner's Code	MOC	DX	IR LO ML SA WT WM MS
Markings	Owner's Logo	MOL	DX	IR LO ML SA WT WM MS
Markings	Serial Number and Check Digit	MSN	XH	IR LO ML SA WT WM MS
Markings	Single Character (digits)	MSD	XH	IR LO ML SA WT WM MS
Markings	Size and Type Marking	MST	XH	IR LO ML SA WT WM MS
Markings	UIC Decal	MUI	XH	IR LO ML SA WT WM MS
Markings	Unspecified (other) Marking	MRU	XX	IR LO ML SA WT WM MS

Preferred EDIS for the Container Industry

6.2 Dry Vans, continued				
Assembly	Component	Component Code	Location Code	Damage Codes
Markings	Weight (mass) Panel	MMI	DH	IR LO ML SA WT WM MS
Miscellaneous	Cargo Container	MCO	XX	CT DY FQ OR SA

6.3 IICL Preferred Component, Location & Damage Codes: Open Tops

Assembly	Component	Component Code	Location Code	Damage Codes
Rear	Header Pin	HGP	DH	BT BK FZ MS
Rear	Header Pin Chain	HPC	DH	BK MS
Rear	Removable/Swinger Header	RRT	DH	BT BW DT CO CU FZ IR
Side Wall	Tarpaulin Seal	TNS	TX	BK BT MS
Roof (Top)	Tarpaulin Assembly	TNA	TX	CU HO IR MS
Tarpaulin Assembly	Tarpaulin Grommet	TNG	TX	BK BT CO MS
Tarpaulin Assembly	TIR Cord	TIC	TX	BT LO MS
Top Rails	TIR Cord Ring	TIR	TX	GT BK CU MS
Interior	Roof Bow	RBO	TX	BT CU LO
Interior	Roof Bow Holder	RBH	TX	BT BK CU MS

7.0 IICL SUGGESTED ESTIMATE FORMAT AND HEADER ITEMS

This section denotes estimate formatting and header items important to processing estimate information.

NOTE: Each leasing company's estimate information and formatting differs; therefore, it is suggested you consult with them to obtain any specific requirements they may have.

REPAIR ESTIMATE

Unit Number: Equipment Type: Turn In Date: Estimate Date: On-Hire Date: Labor Rate: Manufacturer/YR/MO: DPP Coverage (Y) or (N) Original Estimate Date:	Depot: Customer: Estimate Number: Lease Out Location: Estimate Number: Revision Number: Unit Measure: Estimate Currency:
---	--

Item Number	Component Code	Location Code	Damage Code	Repair Code	Length	Width	Quantity	Party	Hours	Labor Cost	Material Cost	Total Cost
-------------	----------------	---------------	-------------	-------------	--------	-------	----------	-------	-------	------------	---------------	------------

Summary	Labor Hours Cost	Material Cost Tax	Total
Damage			
User/Lessee			
DPP/Insurance			
Maintenance			
Owner/Lessor			
Total			

Comments:

(SAMPLE)
REPAIR ESTIMATE

Unit Number: GGDU 123456-7	Depot: Palmer Industries
Equipment Type: 40 High Cube	88 First Street
Turn In Date: 07/March/02	Newark, NJ 07724
Estimate Date: 08/March/02	Customer: Maersk
Estimate Number: PI001	100 Market St
On-Hire Date: 01/January/02	New York, NY 10027
Labor Rate: 40.00	Lease Out Location: Hong Kong
Manufacturer: Jindo 01/May/99	Unit Measure: ZZZ
DPP Coverage: (Y) or (N)	Estimate Currency: USD
Original Estimate Date: 07/March/02	Revision Number:

Item Number	Component Code	Location Code	Damage Code	Repair Code	Length	Width	Quantity	Party	Labor Hours	Material Cost	Total Cost	
01	cma	ul5n	cu	it	6.0	0.0	1.0	u	0.75	30.00	2.50	32.50 Cross
	member assembly											
02	mru	exxx	ml	rd	0.0	0.0	3.0	u	0.25	10.00	3.00	13.00
	Markings Other											
03	msd	lt1n	wt	rp	0.0	0.0	2.0	o	1.0	40.00	5.00	45.00
	Markings Single Digit											

Summary	Hours	Labor Cost	Material Cost	Tax	Total
Damage					
User/Lessee	1.0	40.00	1.00	1.00	42.00
DPP/Insurance					
Maintenance					
Owner/Lessor	1.0	40.00	5.00	2.00	45.00
Total	2.0	80.00	6.00	3.00	89.00

Comments: Customer has agreed to pay all cleaning costs separately.

8.0 FREQUENTLY ASKED QUESTIONS

Q. Do you need to enter a code in every field of the damage line?

A. No. Not all customers need this much detail. Please refer to customer's operating instructions for their required information.

Q. Should the reference field only be used for the redelivery number?

A. No. The reference field may be used differently by each individual customer. Please refer to customer's operating instructions.

Q. Do I have to put in the material information for every line item of damage, i.e. what material do I use for a steam clean?

A. No. The Material Code is not an IICL preferred code; therefore, it is not necessary. In the case of a steam clean, this field would be left blank.

Q. Will comments entered be reflected on the estimate?

A. Yes. The comments are transmitted to assist in providing the customer with more detailed information.

Q. If there is no code for the repair, damage or component, can we make one up?

A. No. The IICL preferred code listing should encompass all probable situations. Contact your customer to discuss any specific issues you may have.

Q. If there are multiple damages to the same component that are alike but of different sizes, do I need to enter them on separate lines?

A. The size fields should be used to indicate the size of the repair, not the damage. Refer to the recipient's operating procedures in the event they have more detailed instructions.

Q. How would you describe the location when you want to remove glue from various places in the interior? Do you need to complete separate line items for each spot?

A. Refer to the recipient's operating procedures since they may have specific instructions regarding this issue.

Q. Do I have to adhere to the IICL preferred codes and combinations?

A. No. However, the codes and combinations were developed to simplify the estimating process and allow for the customer to identify damages and repairs electronically within their system.

Have another question?

**ASK IICL by
sending inquiries to the
attention of Gary Danback
E-mail:
edisinquiry@iicl.org**

9.0 DATA ERRORS

In the event of data errors or error messages occurring, you should refer to your EDI vendor. For your information, several useful links and contacts are listed below:

IAS

Steve Dowse

sdowse@interasset.com

1-510-387-4739

Newport West

www.nwds.com

Michael Sledge

mlsledge@nwds.com

1-925-855-1131 ext. 15

J.E.I.

J o h n E v a n s

support@johnevensinternational.com

44 161 456 4896

Sterling Commerce

John Christensen

john_christensen@stercomm.com

1-206-322-7113

10.0 USEFUL LINKS (IICL MEMBERS)

<p>Amphibious Container Leasing Ltd. (Amficon) Ancells Court, Ancells Park Fleet, Hampshire GU51 2UY United Kingdom Tel: +44 (0) 1252 812266 Fax: +44 (0) 1252 812332</p>	<p>Carlisle Leasing International, LLC www.carlisleleasing.com 1 Maynard Drive Park Ridge, NJ 07656 Tel: +1 201 391 0800 Fax: +1 201 391-0356</p>
<p>Container Applications International, Inc. (CAI) www.capps.com 550 Kearny Street, Suite 950 San Francisco, CA 94108 Tel: +1 415 788 0100 Fax: +1 415 788 3430</p>	<p>Cronos Containers Ltd. www.cronos.com 444 Market Street, 15th Floor San Francisco, CA 94111 Tel: +1 415 677 8990 Fax: +1 415 677 9196</p>
<p>Flexi-Van Leasing Inc. www.flexi-van.com 251 Monroe Avenue Kenilworth, NJ 07033-1106 Tel: +1 908 276 8000 Fax: +1 908 276 7666</p>	<p>Florens Container Services (U.S.) Ltd. www.florens.com 303 Second Street, Suite 355 South San Francisco, CA 94107-1328 Tel: +1 415 348 2800 Fax: +1 415 348 2888</p>
<p>GE SeaCo SRL www.General.com Sea Containers House 20 Upper Ground London SE1 9PF U.K. Tel: +44 (0) 20 7805 5000 Fax: +44 (0) 20 7805 5900</p>	<p>Gold Container Corp. www.touax.com Tour Arago, 5, rue Bellini 92806 Puteaux la Defense France Tel: +33 (0) 1 46 96 18 10 Fax: +33 (0) 1 46 96 18 15</p>
<p>Interpool, Inc. www.interpool.com 211 College Road East Princeton, NJ 08540 Tel: +1 609 452 8900 Fax: +1 609 452 8211</p>	<p>Textainer Equipment Management (U.S.) Ltd. www.textainer.com 650 California Street, 16th Floor San Francisco, CA 94108 Tel: +1 415 434 0551 Fax: +1 415 434 0599</p>
<p>TRAC Lease, Inc. www.interpool.com 633 Third Avenue New York, NY 10017 Tel: +1 212 986 3388 Fax: +1 212 986 3984</p>	<p>Transamerica Leasing Inc. www.tradexonline.com 100 Manhattanville Road Purchase, NY 10577-2135 Tel: +1 914 251 9000 Fax: +1 914 697 2549</p>
<p>Triton Container International Ltd. www.tritoncontainer.com 55 Green Street, Suite 500 San Francisco, CA 94111 Tel: +1 415 956 6311 Fax: +1 415 421 5318</p>	

11.0 GLOSSARY

The following terms are widely used within the EDI standards community:

ACKNOWLEDGEMENT	A specific type of EDI segment used within EDI to indicate acceptance or rejection of an entity.
ANSI	American National Standards Institute (www.ansi.org).
ANSI X12	A commonly used public message standard, developed in 1979 by the Accredited Standards Committee X12 (ASC X12) of the American National Standards Institute (ANSI). Its emphasis is on trading partners with the United States.
ASYNCHRONOUS	A communications protocol that sends messages one character at a time. Each character is surrounded by start and stop bits and may have a parity bit.
BISYNCHRONOUS	A communications protocol whereby messages are sent as blocks of characters. The blocks of data are checked for completeness and accuracy by the receiving computer.
COMPONENT ELEMENT	In EDIFACT, a sub-element of a composite data element.
COMPONENT ELEMENT SEPARATOR	A character separating component data elements.
COMPOSITE DATA ELEMENT	In EDIFACT, an element that consists of multiple component data elements.
CONTROL STRUCTURE	The beginning and end (header and trailer) segments for entities in EDI.
CUSTOMER INTERFACE	A customer computer program to “map” data from an EDI standard into the proprietary format required by a computer application.
DATA DICTIONARY	The publication that defines all of the elements for which a standard exists.
DATA ELEMENT	The fundamental unit of EDI data (e.g. Container Number).
DATA ELEMENT SEPARATOR	Used to delimit the boundaries of a data element. It precedes each data element within a segment.
DATA SEGMENT	A data segment is the intermediate unit of information in a message. A segment consists of a pre-defined set of functionally related data elements that are identified by their sequential positions within the set. A segment

Preferred EDIS for the Container Industry

DATA SEGMENT (continued)	begins with a segment identifier – a three-character upper case alphabetic code that identifies each segment and ends with a segment terminator.
DELIMITER	A character that separates elements. A delimiter tells the computer where one element ends and the next one begins.
DOWNLOAD	To transfer information from a large computer to a smaller computer.
E-MAIL	The electronic exchange of “free form” messages and letters, used primarily as a way to improve communications between people.
EDI	Electronic Data Interchange. The electronic exchange of standard business documents between the computers of two trading partners.
EDIFACT	EDI for Administration Commerce and Trade. The standard for international EDI created by the International Standards Organization (ISO).
EDIS	The acronym for equipment data interchange standard web site for container industry users.
EDI STANDARDS	A defined standardized format for transaction sets.
ELEMENT	The smallest item of information in the standard. Comparable to a “field”.
FLAT FILE	A computer file from which all formatting symbols have been stripped. Flat files are generated by computer applications or translation software so that data can be mapped from one format to another.
FIXED LENGTH FORMAT	A computer flat file format that requires each line (segment) of information to be a specific length.
FUNCTIONAL ACKNOWLEDGEMENT	These are used by the receiving party to indicate the syntactical correctness of the Groups and Transactions received from a trading partner. They are returned to the sender in a Functional Acknowledgement Group with individual transactions indicating acceptance.
FUNCTIONAL GROUPS	Similar transaction sets transmitted from the same location, bounded by Functional Group Header and Functional Group Trailer segments.
FUNCTIONAL GROUP ENVELOPE	An EDI envelope that separates different types of transaction sets.

HUB COMPANY	The company that initiates the implementation of EDI, for example a steamship line or leasing company. The trading partners of the hub company are referred to as spoke companies.
INTERCHANGE	The actual exchange of information from one company to another. A set of documents is sent from one sender to one receiver at a time. Each interchange begins with an Interchange Header segment, ends with an Interchange Trailer segment and is delineated by interchange control segments.
INTERCHANGE ACKNOWLEDGEMENT	An Interchange Acknowledgement indicates the success or failure of a particular Interchange transmission. It does not imply acceptance of the EDI documents that make up the Interchange.
INTERCHANGE ENVELOPE	An EDI envelope that contains all the transaction sets for a particular trading partner.
INTERCHANGE HEADER	The Interchange Header contains the sender and receiver addressing information, the sender date and time and a control number that uniquely identifies the interchange between the trading partners. It also defines the Data Element Separator, the Sub-element Separator and the Segment Terminator to be used throughout the interchange (i.e. until the next Interchange Trailer).
INTERCHANGE TRAILER	Contains information to match it with its Interchange Header and audit trailer information to ensure that no data was lost during the transmission. ISO International Standards Organization (www.iso.org).
PROTOCOL	Methods of communicating data over telephone lines.
PUBLIC STANDARDS	EDI standards that are used by multiple industries and are developed and maintained by open organizations.
SEGMENT	Segments are related to data elements in a defined sequence, a “logical record”.
SEGMENT TAG	This is unique identifier composed of a combination of two or three uppercase letters and/or digits, the first character of which is alphabetic. The identifier serves as a name for the segment and is located in the first character position of the segment.
SEGMENT TERMINATOR	A character that separates segments. A segment terminator tells the computer where one segment ends and the next begins. The terminator is defined in the Interchange Header.

Preferred EDIS for the Container Industry

SPOKE COMPANY	A trading partner of a hub company.
STANDARDS BODIES	Organizations and/or committees that develop EDI standards.
SUB-ELEMENT	A portion of a larger composite data element.
SUB-ELEMENT SEPARATOR	A single character used to separate the components or an element.
THIRD-PARTY NETWORK	A company that acts as a post office or intermediary between trading partners. A third-party network provides communications services that allow trading partners to communicate with each other electronically.
TRANSACTION SETS	Standard defined groupings of one or more segments which represent a specific EDI document. Examples of transactions include Equipment Interchange Reports (Gate-in and Gate-out) GATEIN and GATOUT and Repair Estimates. The order and number of segments within a transaction are defined for each applicable EDI standard.
TRANSLATION SOFTWARE	A software program used to reformat business documents into an EDI standard. Translation software puts the data in the standard's syntax and inserts the appropriate EDI symbols for the transmission of the transaction set. The CDX EDI Bridge is an example of a translation software program.
VARIABLE LENGTH FORMAT	A computer format in which fields or elements are given a specific location, a maximum length and are separated with a symbol that denotes the end of the element. EDI standards use a variable length format.